

InertSearch™ for LC

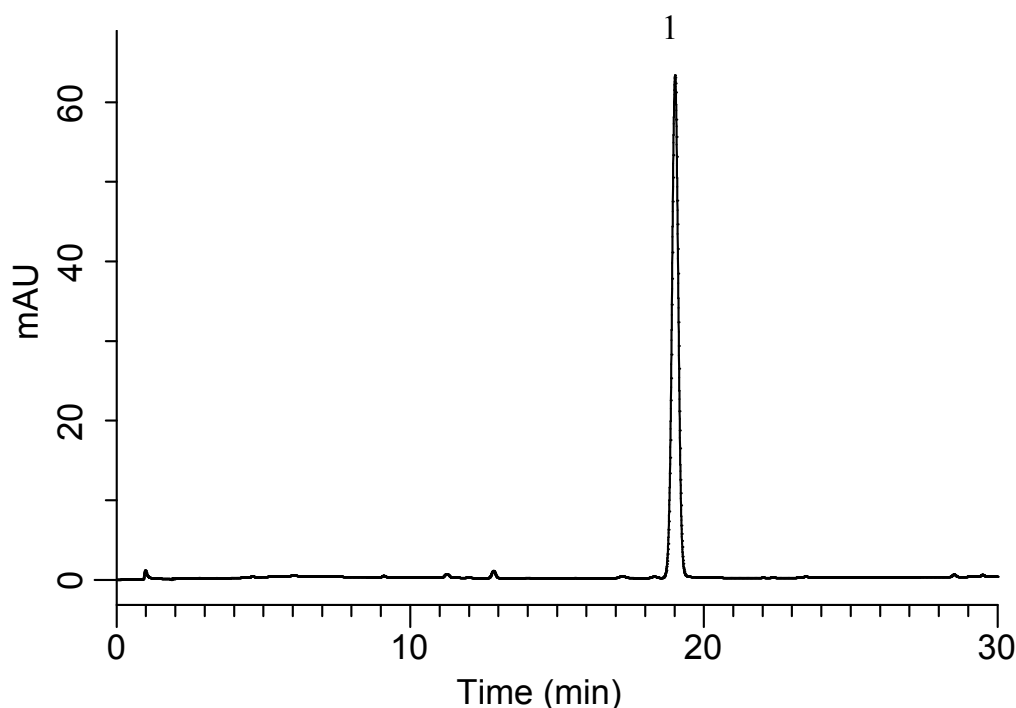
Inertsil® Applications

Analysis of Dexamethasone Sodium Phosphate

(Under the Condition of the draft for the Japanese Pharmacopoeia,
Dexamethasone Sodium Phosphate)

Data No. LB527-0812

Standard solution of Assay



Conditions

System : GL7700 HPLC system
Column : Inertsil ODS-4 (5 μ m, 150 x 3.9 mm I.D.)
Column Cat. No. : 5020-87023
Eluent : A) CH₃CN
 : B) Buffer*

| Time(min) | A(vol%) | B(vol%) |
|-----------|---------|---------|
| 0 | 12 | 88 |
| 8 | 20 | 80 |
| 15 | 20 | 80 |
| 30 | 40 | 60 |

Analyte:

1. Dexamethasone Phosphate 400 mg/L

Theoretical plates (1) : 35,565 (\geq 10,000)

Symmetry factor (1) : 1.01 (\leq 2.0)

RSD of the peak area of 1 (%) (n=6)
: 0.06 (\leq 1.0)

Flow rate : 1.0 mL/min
Col. Temp. : 25 °C
Detection : UV 242 nm (UV7750 UV Detector)
Injection Vol. : 15 μ L
Sample : Standard

* Dissolve 7.8 g of NaH₂PO₄ and 1.88 g of sodium 1-hexanesulfonate in 1900 mL of water. Adjust to pH 3.0 with H₃PO₄, and make up to 2000 mL by adding water.