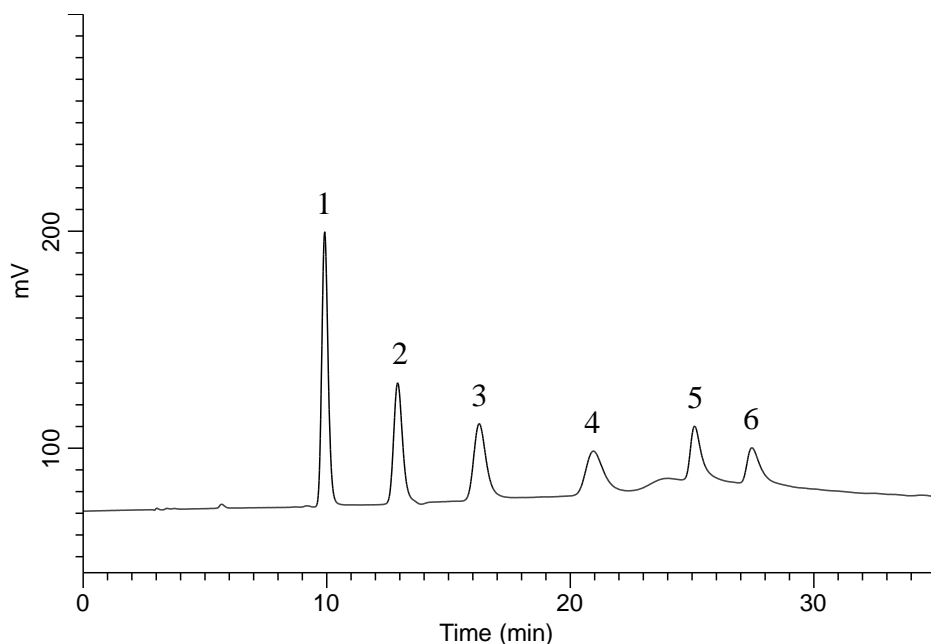


Analysis of Xylooligosaccharides



Conditions

System : GL7700 HPLC system
Column : InertSphere Sugar-1
 (5 μ m, 150 x 4.6 mm I.D.)
Column Cat. No. : 5020-11001
Eluent : A) 50 mM NaOH in H₂O
 B) (50 mM NaOH + 200 mM CH₃COONa) in H₂O

Time (min)	A (vol%)	B (vol%)
0.0	90	10
35.0	60	40

Flow Rate : 0.5 mL/min
Col. Temp. : 30 °C
Detection : ECD Pulse Mode (ED723, Gold)
 E1: 150 mV t1: 600 ms
 E2: -1500 mV t2: 50 ms
 E3: 600 mV t3: 50 ms
 E4: -200 mV t4: 100 ms
 ts: 50 ms

Injection Vol. : 10 μ L
Sample : Standard

Analyte:

1. Xylose
2. Xylobiose
3. Xylotriose
4. Xylotetraose
5. Xylopentaose
6. Xylohexaose
(10 mg/L each)