

InertSearch™ for LC

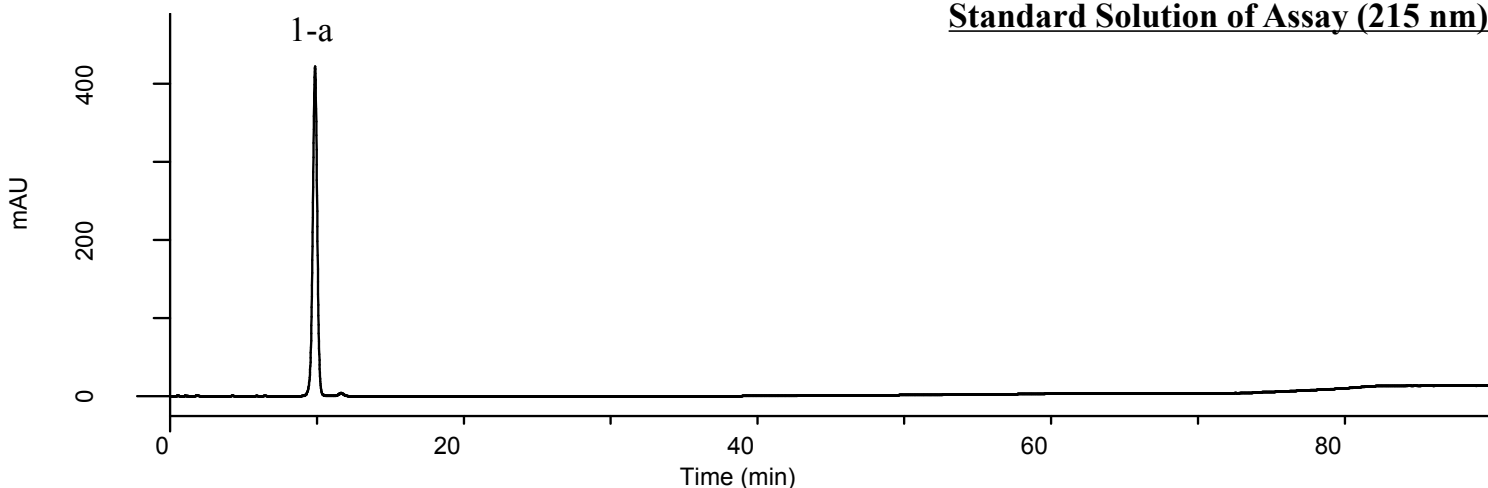
Inertsil™ Applications

Analysis of Ezetimibe

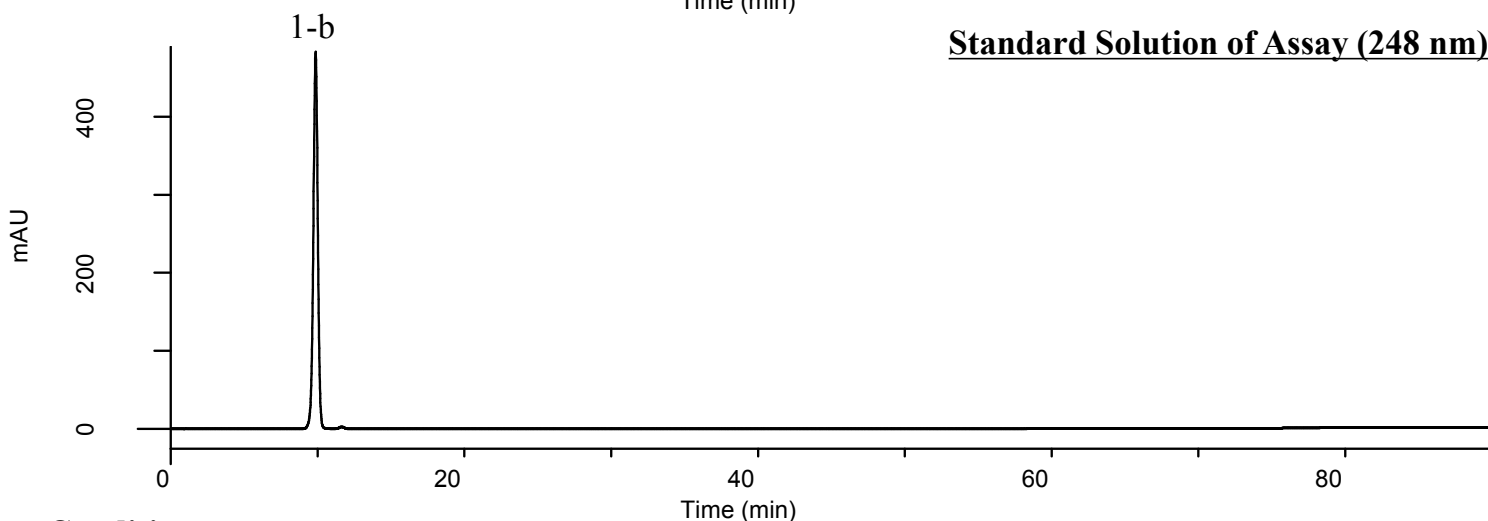
(Under the Condition of USP41-NF36, Ezetimibe)

Data No. LB549-0812

Standard Solution of Assay (215 nm)



Standard Solution of Assay (248 nm)



Conditions

System : GL7700 HPLC system
Column : InertSustain PFP (5 μ m, 150 x 4.6 mm I.D.)
Column Cat. No. : 5020-87730
Eluent : A) CH₃CN
 B) CH₃OH
 C) H₂O

Analyte:

1. Ezetimibe 250 mg/L

Symmetry factor (1-b) : 0.95 (< 1.5)
 RSD of the peak area of 1-b (%) (n=6) : 0.24 (< 0.73)

| Time(min) | A(vol%) | B(vol%) | C(vol%) |
|-----------|---------|---------|---------|
| 0 | 27 | 10 | 63 |
| 37 | 27 | 10 | 63 |
| 60 | 50 | 10 | 40 |
| 70 | 50 | 10 | 40 |
| 80 | 80 | 10 | 10 |
| 90 | 80 | 10 | 10 |
| 90.1 | 27 | 10 | 63 |
| 100 | 27 | 10 | 63 |

Flow rate : 2.0 mL/min
Col. Temp. : 40 °C
Detection : UV 215 nm and 248 nm (PD7752 PDA Detector)
Injection Vol. : 60 μ L
Sample : Standard