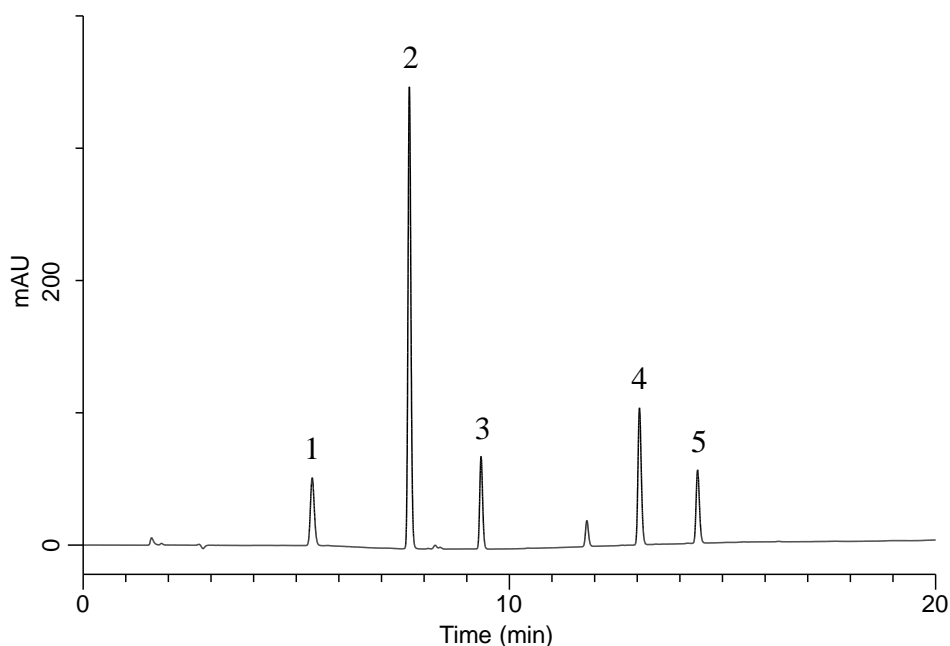


## Analysis of Artificial sweeteners



### Conditions

**System** : GL7700 HPLC system  
**Column** : InertSustain AQ-C18  
 (5  $\mu$  m, 150 x 4.6 mm I.D.)  
**Column Cat. No.** : 5020-89730  
**Eluent** : A) CH<sub>3</sub>CN  
 B) 10 mM KH<sub>2</sub>PO<sub>4</sub> in H<sub>2</sub>O (pH 2.0, H<sub>3</sub>PO<sub>4</sub>)

Time (min)	A (vol%)	B (vol%)
0.0	5	95
20.0	65	35

**Flow Rate** : 1.0 mL/min  
**Col. Temp.** : 40 °C  
**Detection** : UV 210 nm (PD7752 PDA Detector)  
**Injection Vol.** : 20  $\mu$  L  
**Sample** : Standard

### Analyte:

1. Acesulfame potassium  
 2. Saccharin  
 3. Aspartame  
 4. Advantame  
 5. Neotame  
 (10 mg/L each)