

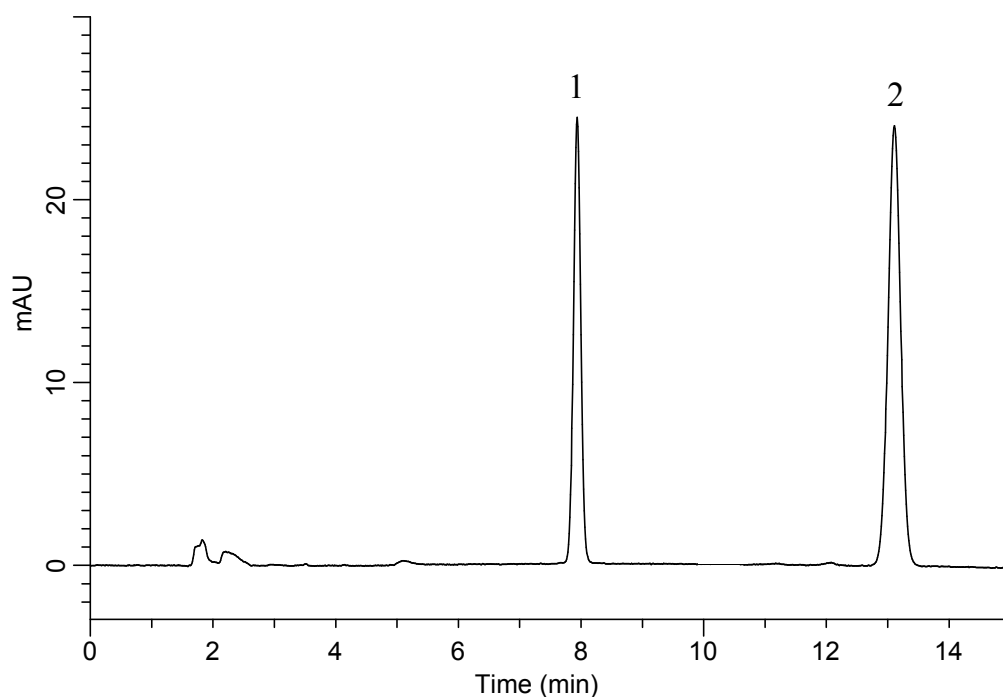
# InertSearch™ for LC

Inertsil™ Applications

## Analysis of Steviol

(Under the Condition of the JPE (Japanese Pharmaceutical Excipients),  
Purified Stevia Extract (4) Steviol)

Data No. LB563-0919



### Conditions

**System** : GL7700 HPLC system  
**Column** : InertSustain AQ-C18  
(5  $\mu$  m, 250 x 4.6 mm I.D.)  
**Column Cat. No.** : 5020-89731  
**Eluent** : A) CH<sub>3</sub>CN  
B) 0.1 % H<sub>3</sub>PO<sub>4</sub> in H<sub>2</sub>O  
A/B = 11/9, v/v  
**Flow Rate** : 1.2 mL/min  
**Col. Temp.** : 40 °C  
**Detection** : UV 213 nm (PD7752 PDA Detector)  
**Injection Vol.** : 20  $\mu$  L  
**Sample** : Standard

### Analyte:

1. 4-*tert*-Butylbenzoic acid 10 mg/L  
2. Steviol 50 mg/L

Resolution (1, 2) : 17.1 ( $\geq$  6)