

InertSearch™ for LC

Inertsil™ Applications

Analysis of Steviol glycosides

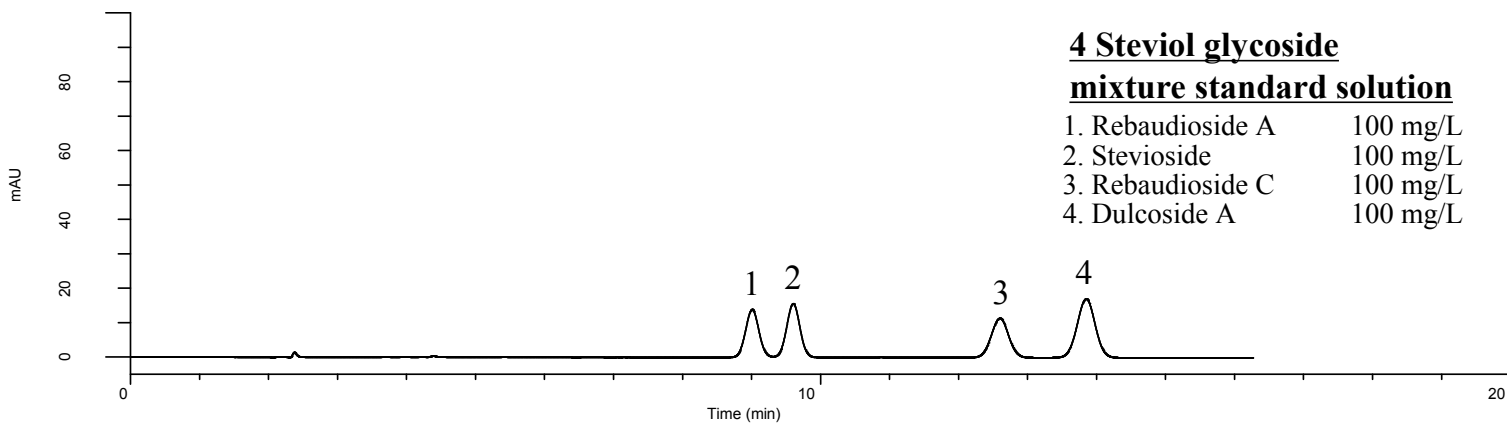
(Under the Condition of the JSFA-IX (Japanese Standards of Food Additives),
Stevia Extract)

Data No. LB566-0919

4 Steviol glycoside

mixture standard solution

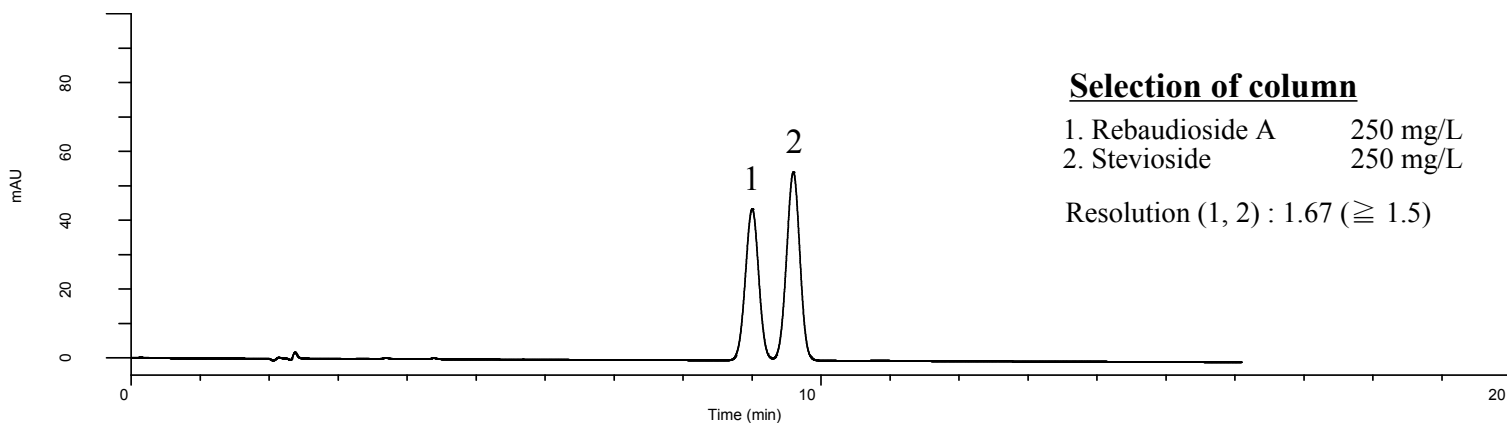
1. Rebaudioside A	100 mg/L
2. Stevioside	100 mg/L
3. Rebaudioside C	100 mg/L
4. Dulcoside A	100 mg/L



Selection of column

1. Rebaudioside A	250 mg/L
2. Stevioside	250 mg/L

Resolution (1, 2) : 1.67 (≥ 1.5)



Conditions

System : GL7700 HPLC system
Column : InertSustain AQ-C18
(5 μ m, 250 x 4.6 mm I.D.)
Column Cat. No. : 5020-89731
Eluent : A) CH₃CN
B) 0.01 M Phosphate buffer in H₂O (pH 2.6)*
A/B = 8/17, v/v
Flow Rate : 1.0 mL/min
Col. Temp. : 40 °C
Detection : UV 210 nm (UV7751 UV Detector)
Injection Vol. : 10 μ L
Sample : Standard

Analyte:

1. Rebaudioside A
2. Stevioside
3. Rebaudioside C
4. Dulcoside A

*Dissolve 1.56 g of sodium dihydrogenphosphate dihydrate in 1000 mL of water (Solution A).

Dissolve 1.15 g of phosphoric acid in 1000 mL of water (Solution B).

Mix together equal parts of Solution A and Solution B.