

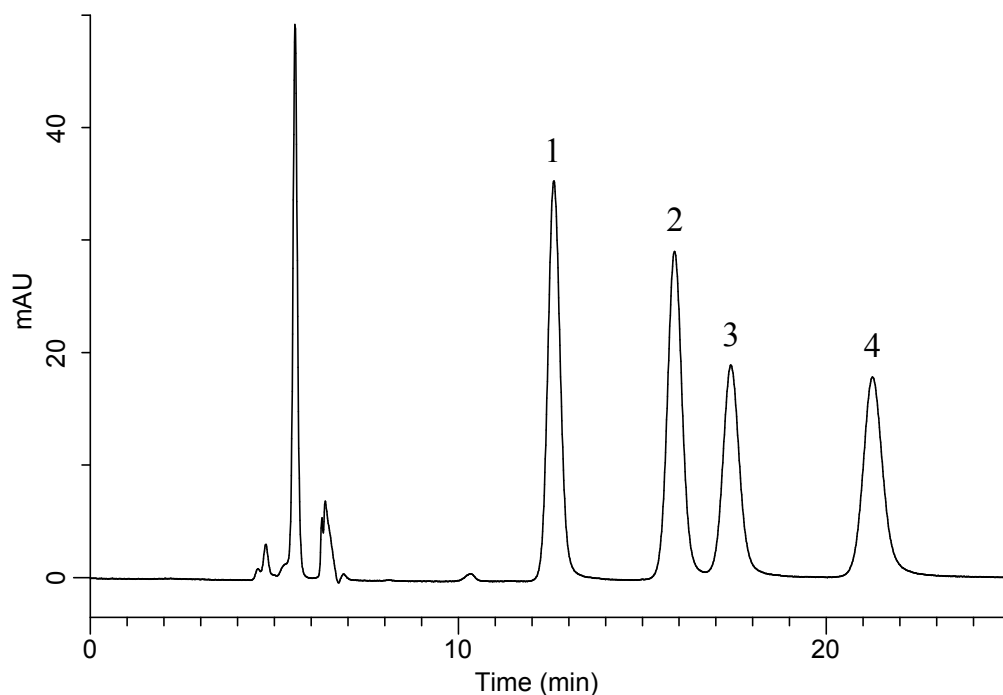
InertSearch™ for LC

Inertsil™ Applications

Analysis of Steviol glycosides

(Under the Condition of the JSFA-VIII (Japanese Standards of Food Additives),
Stevia Extract)

Data No. LB569-0919



Conditions

System : GL7700 HPLC system
Column : InertSustain NH2
(5 μ m, 150 x 4.6 mm I.D.)
Column Cat. No. : 5020-16627
Eluent : A) CH₃CN
B) H₂O
A/B = 4/1, v/v
Flow Rate : 0.32 mL/min
Col. Temp. : 40 °C
Detection : UV 210 nm (PD7752 PDA Detector)
Injection Vol. : 10 μ L
Sample : Standard

Analyte:

1. Dulcoside A
2. Stevioside
3. Rebaudioside C
4. Rebaudioside A