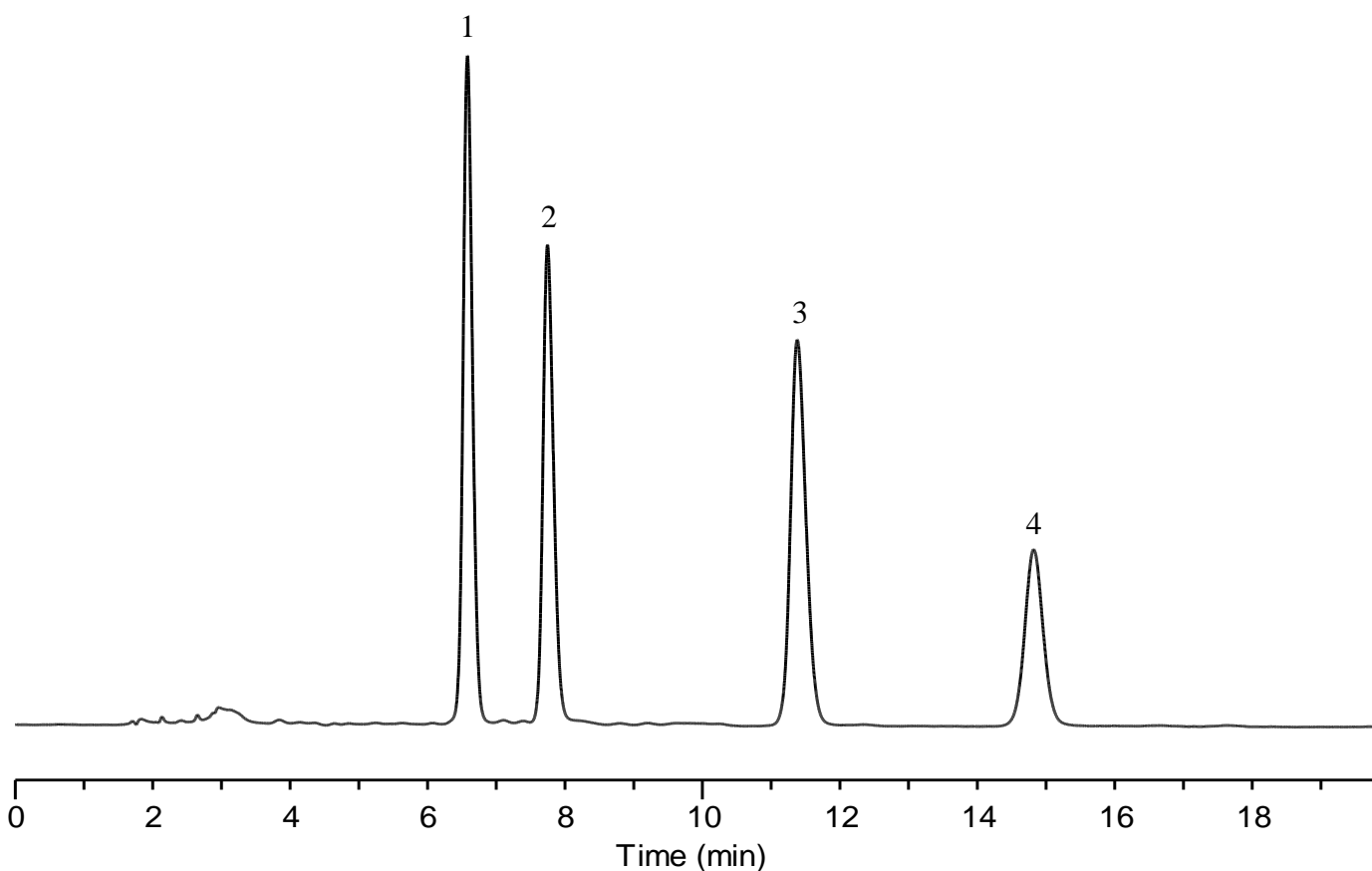


Analysis of Tryptophan and its related compounds



Conditions

System : GL7700 HPLC system
Column : InertSustain PFP HP (3 μ m, 150 x 2.1 mm I.D.)
Column Cat. No. : 5020-87921
Eluent : 0.1% H₃PO₄ in H₂O
Flow rate : 0.2 mL/min
Col. Temp. : 40 °C
Detection : UV 210 nm (UV7750 with semi-micro flow cell)
Injection Vol. : 0.5 μ L
Sample : Standard

Analyte:

1. 5-Hydroxyindoleacetic acid (5-HIAA)	100 mg/L
2. 5-Hydroxytryptophan (5-HTP)	100 mg/L
3. Tryptophan (Trp)	100 mg/L
4. Serotonin (5-HT)	100 mg/L