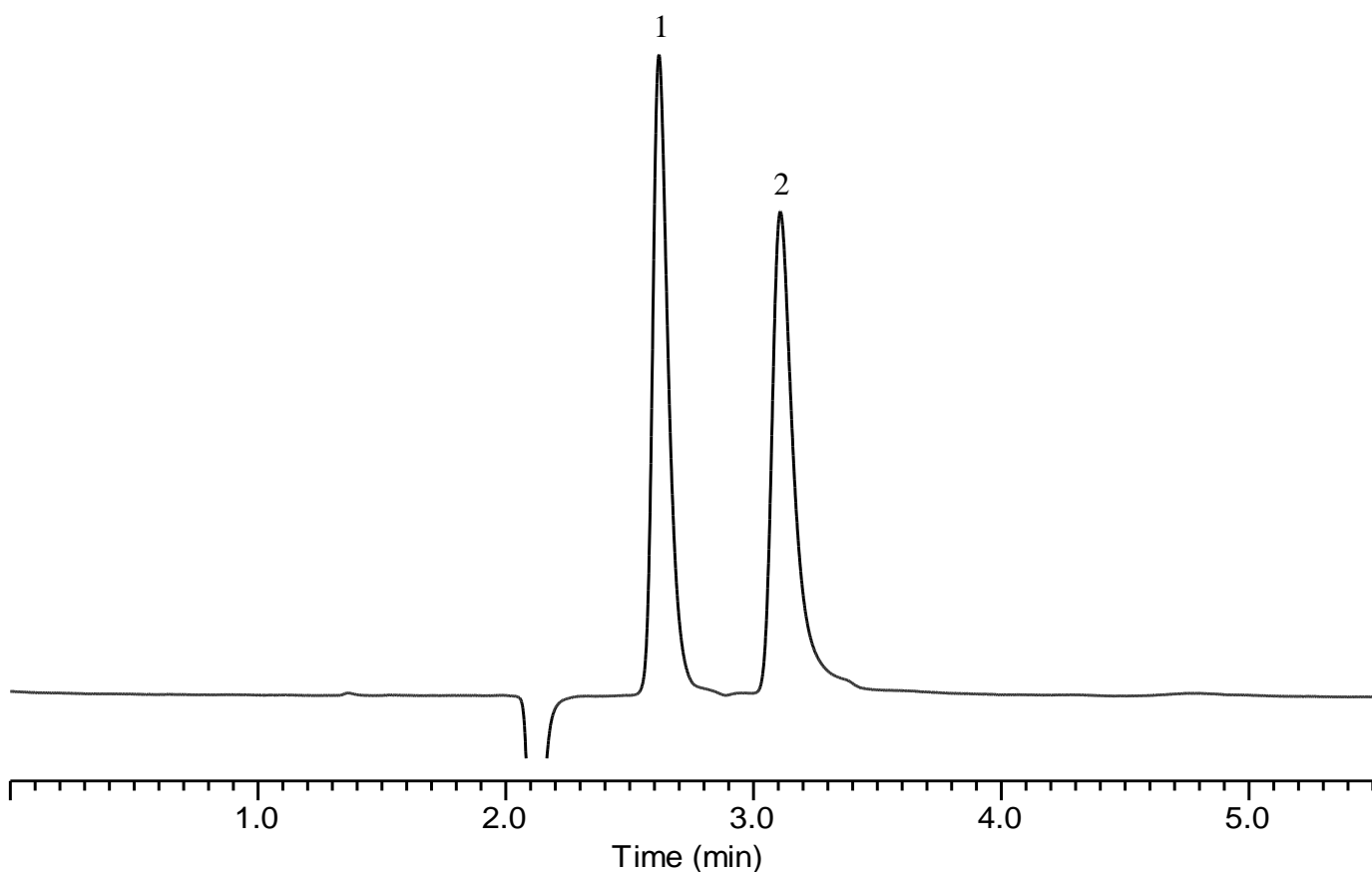


## Analysis of Glutathione



### Conditions

**System** : GL7700 HPLC system  
**Column** : InertSustain PFP HP (3  $\mu$  m, 150 x 2.1 mm I.D.)  
**Column Cat. No.** : 5020-87921  
**Eluent** : 0.1% HCOOH in H<sub>2</sub>O  
**Flow rate** : 0.2 mL/min  
**Col. Temp.** : 40 °C  
**Detection** : UV 230 nm (UV7750 with semi-micro flow cell)  
**Injection Vol.** : 1  $\mu$  L  
**Sample** : Standard

### Analyte:

1. GSH (Reduced form of Glutathione) 500 mg/L  
 2. GSSG (Oxidized form of Glutathione) 500 mg/L