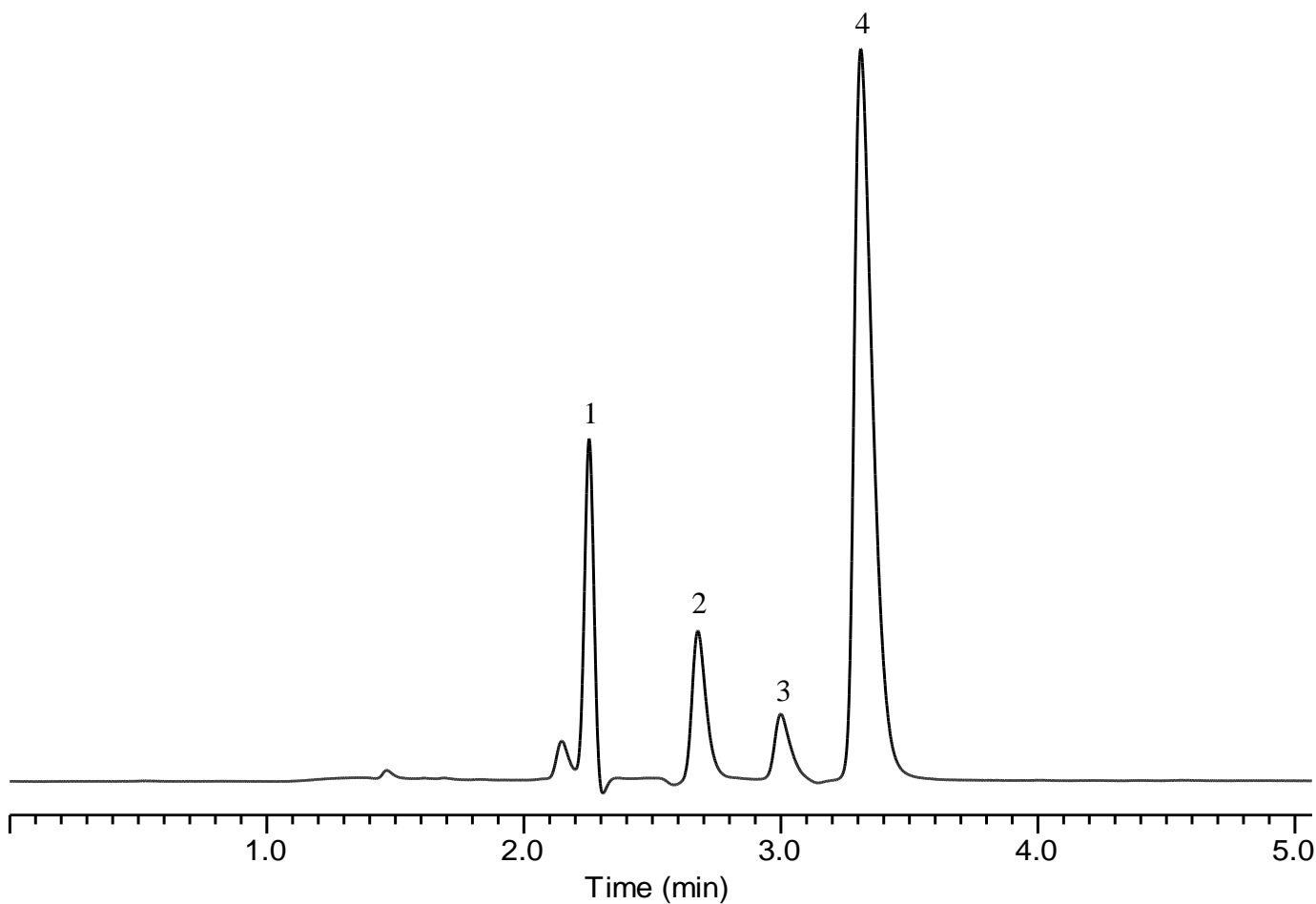


Analysis of Cysteine and its related compounds



Conditions

System : GL7700 HPLC system
Column : InertSustain PFP HP (3 μ m, 150 x 2.1 mm I.D.)
Column Cat. No. : 5020-87921
Eluent : 0.1% HCOOH in H₂O
Flow rate : 0.2 mL/min
Col. Temp. : 40 °C
Detection : UV 220 nm (UV7750 with semi-micro flow cell)
Injection Vol. : 1 μ L
Sample : Standard

Analyte:

| | |
|------------------|----------|
| 1. Cysteine | 100 mg/L |
| 2. Homocysteine | 100 mg/L |
| 3. Cystathionine | 100 mg/L |
| 4. Methionine | 100 mg/L |