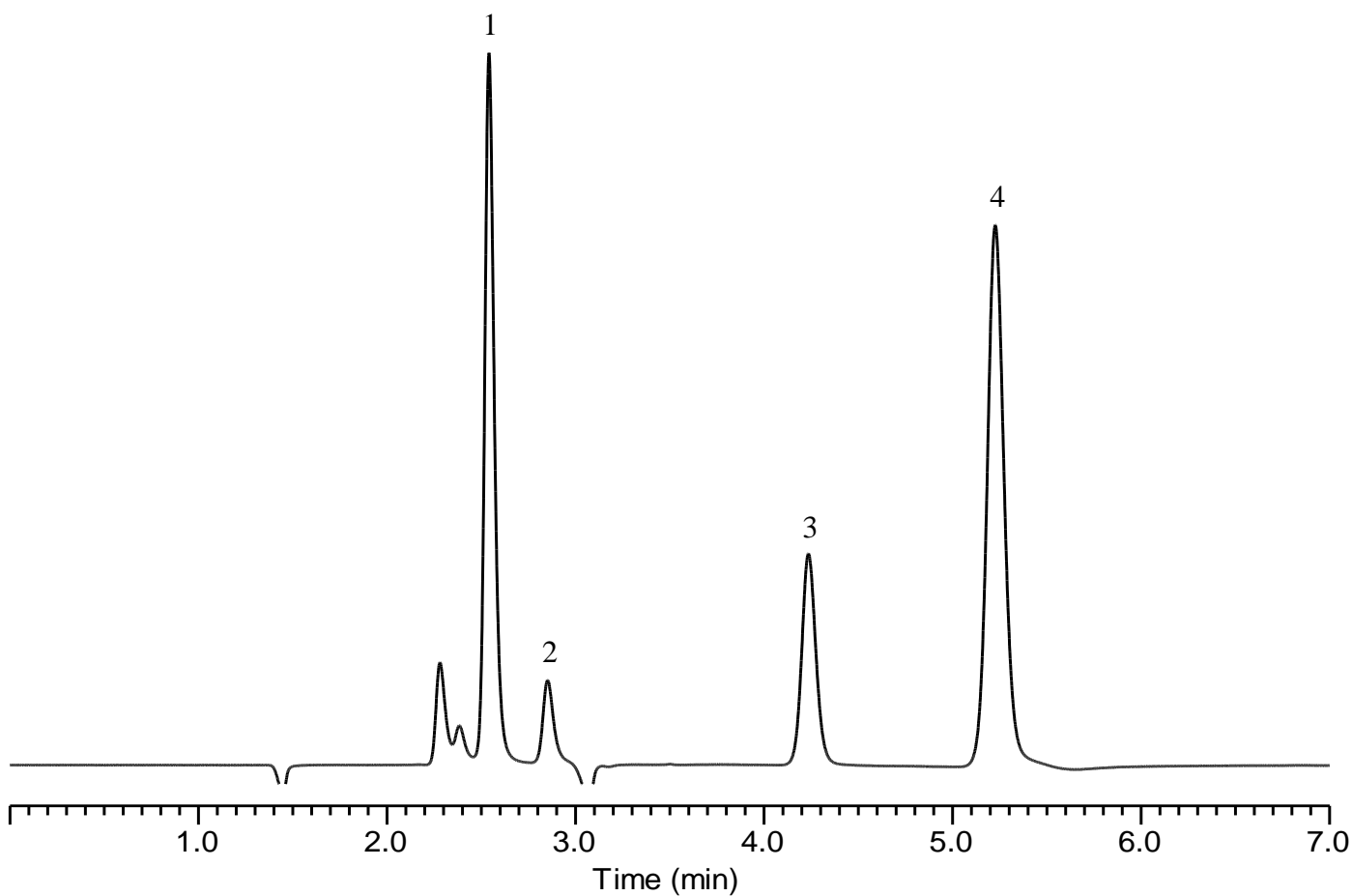


Analysis of Melamine and its related compounds



Conditions

System : GL7700 HPLC system
Column : InertSustain PFP HP (3 μ m, 150 x 2.1 mm I.D.)
Column Cat. No. : 5020-87921
Eluent : 10 mM HCOONH₄ in H₂O
Flow rate : 0.2 mL/min
Col. Temp. : 40 °C
Detection : UV 210 nm (UV7750 with semi-micro flow cell)
Injection Vol. : 0.5 μ L
Sample : Standard

Analyte:

1. Ammelide	100 mg/L
2. Cyanuric acid	1000 mg/L
3. Ammeline	100 mg/L
4. Melamine	100 mg/L