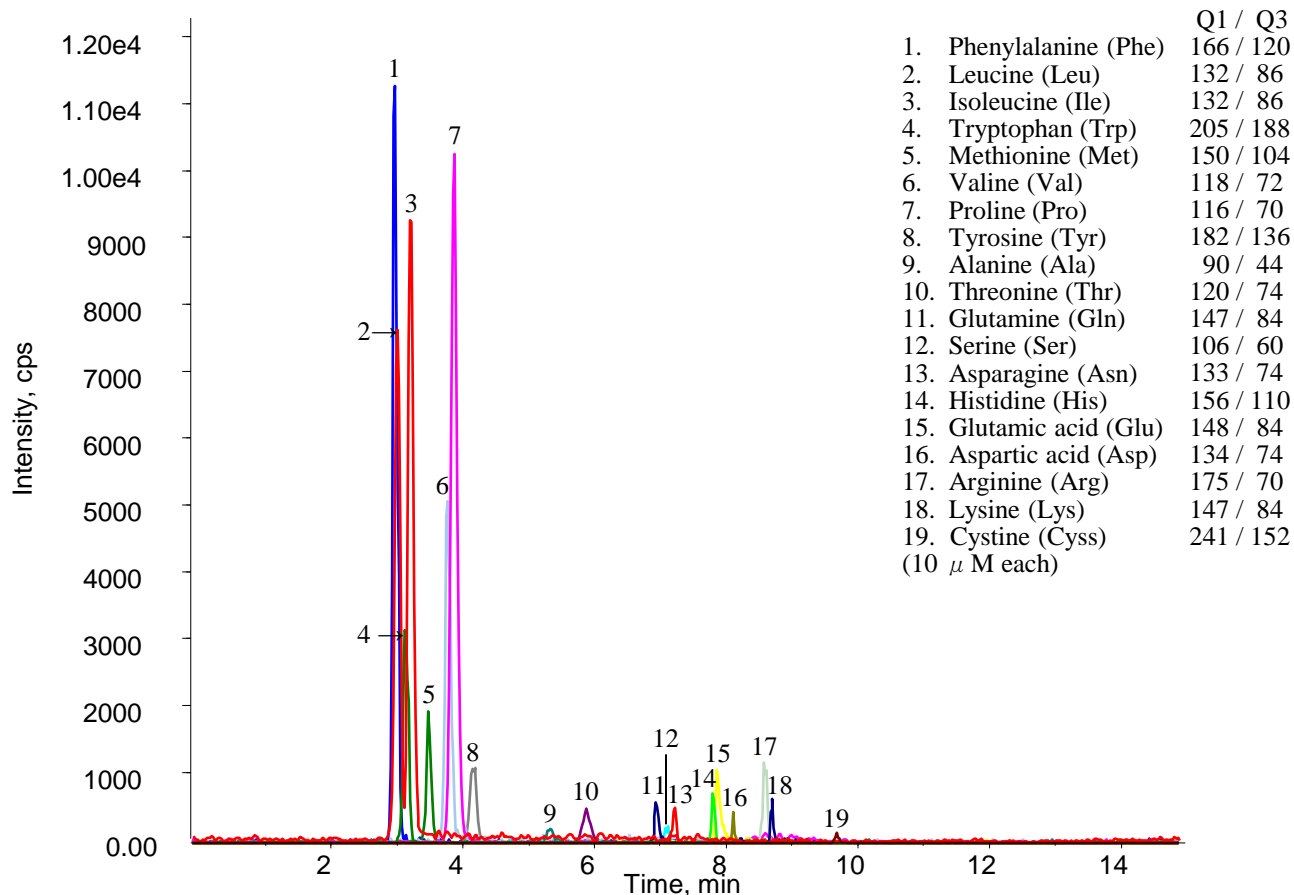


## Analysis of Amino Acids with HILIC mode separation



### Conditions

**Column** : InertSustainAmide  
 (3  $\mu$  m, 150 x 2.1 mm I.D., Metal-free hardware)  
**Column Cat. No.** : 5020-87422  
**Eluent** : A) CH<sub>3</sub>CN  
 B) (100 mM HCOONH<sub>4</sub> + 0.1 % HCOOH) in H<sub>2</sub>O  
 A/B = 80/20 – 3 min – 80/20 – 7 min – 50/50, v/v  
**Flow Rate** : 0.3 mL/min.  
**Col. Temp.** : 40 °C  
**Detection** : LC/MS/MS (3200 Q TRAP® ESI, Positive, SRM)  
**Sample** : Amino Acid (10  $\mu$  M each)  
**Injection Vol.** : 5.0  $\mu$  L