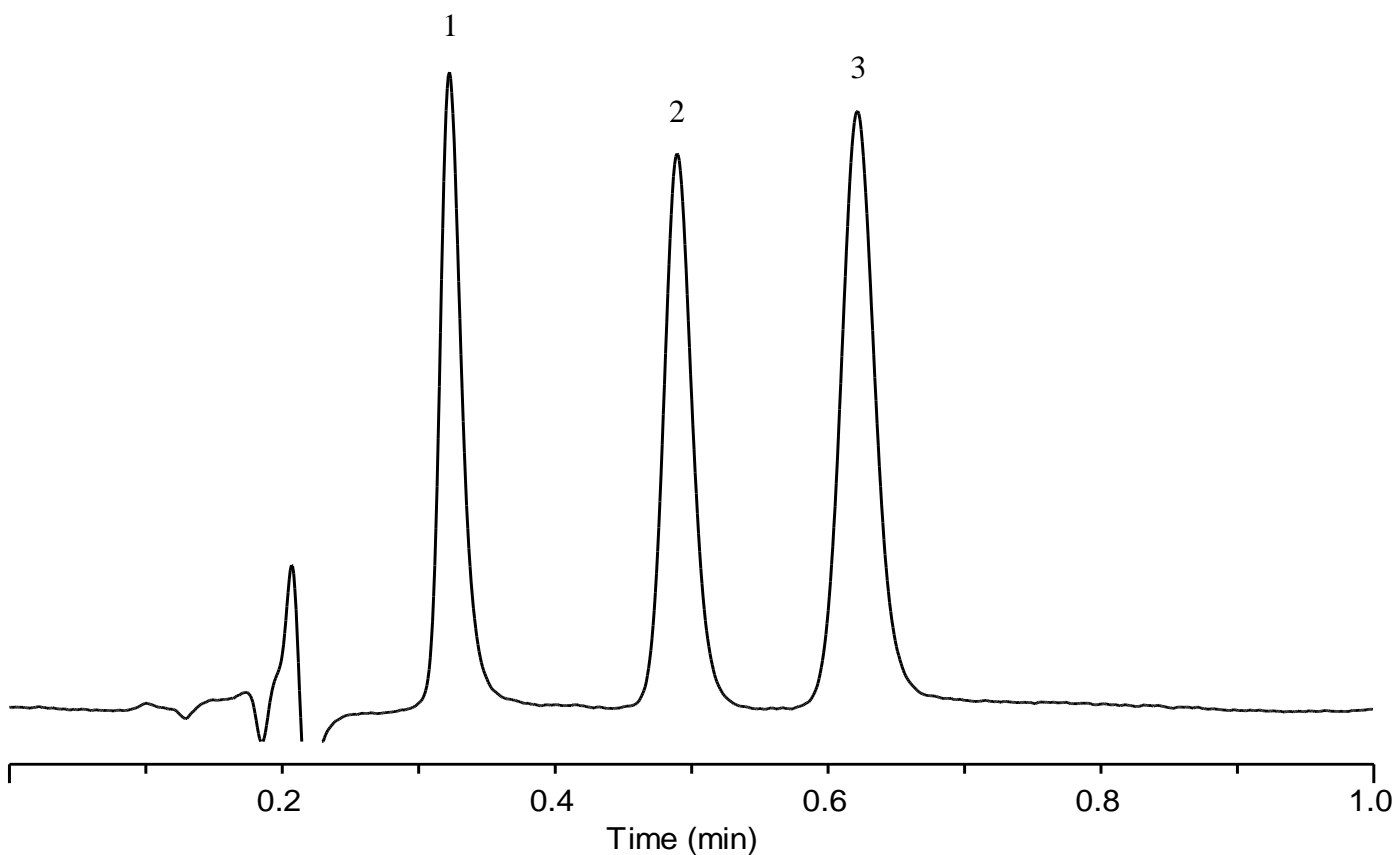


## Analysis of Hydroquinone, Resorcinol, and Catechol



### Conditions

**Column** : MonoSelect C18 for HTS (20 x 2.1 mm I.D.)

**Column Cat. No.** : 5020-10811

**Eluent** : A) CH<sub>3</sub>CN  
 B) H<sub>2</sub>O  
 A/B = 5/95, v/v

**Flow rate** : 0.3 mL/min

**Col. Temp.** : 40 °C

**Detection** : UV 270 nm

**Injection Vol.** : 1 μL

**Sample** : Standard

### Analyte:

1. Hydroquinone	10 mg/L
2. Resorcinol	10 mg/L
3. Catechol	10 mg/L

\* An LC system optimized for high-throughput analysis was used.