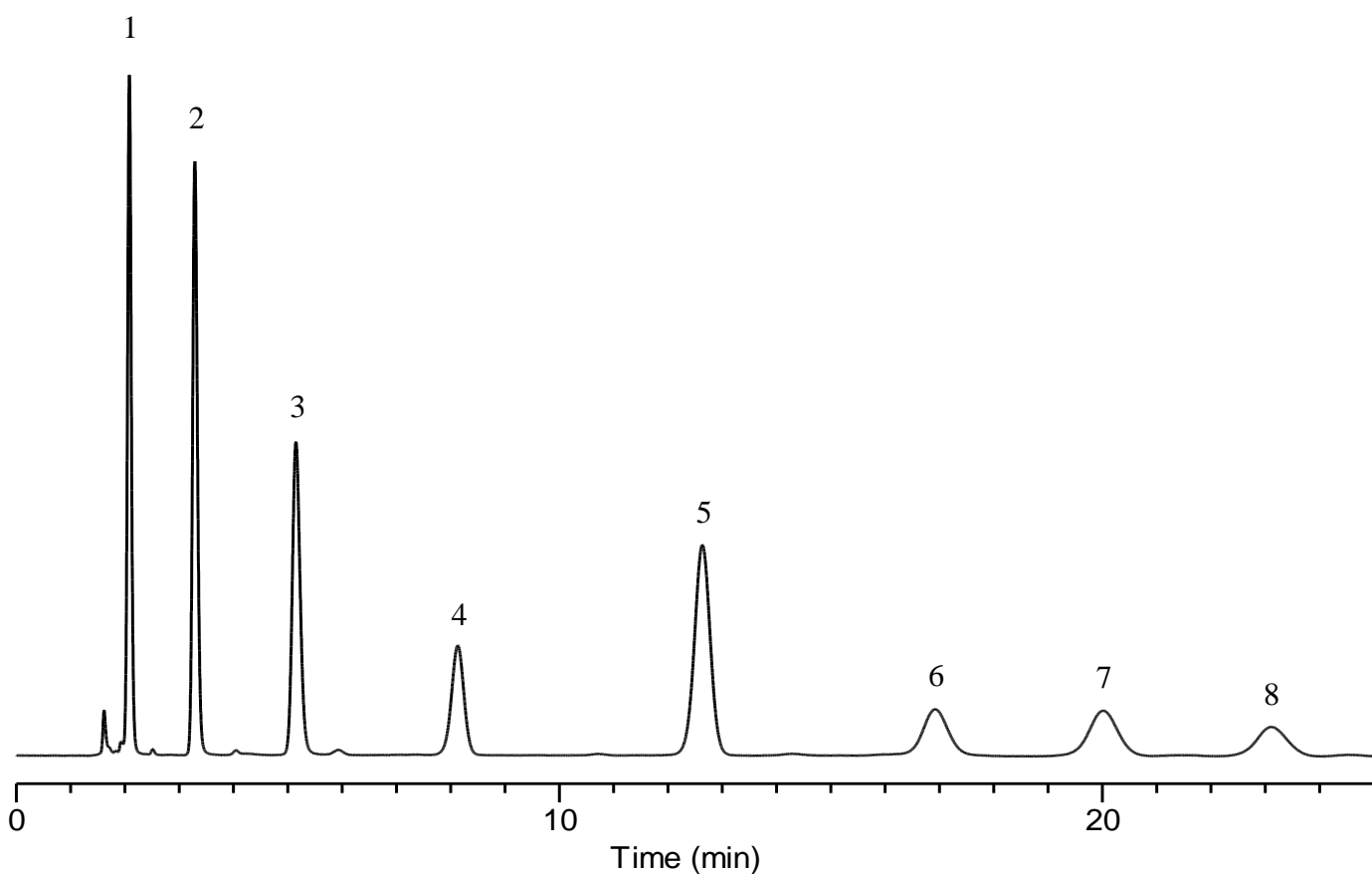


Analysis of Plant hormones



Conditions

Column : InertSustain Cyano (5 μ m, 150 x 4.6 mm I.D.)
Column Cat. No. : 5020-89276
Eluent : A) CH₃OH
 : B) 0.1% H₃PO₄ in H₂O
 : A/B = 10/90, v/v
Flow rate : 1.0 mL/min
Col. Temp. : 40 °C
Detection : UV 210 nm
Injection Vol. : 2 μ L
Sample : Standard

Analyte:

1. <i>trans</i> -Zeatin	50 mg/L
2. Kinetin	50 mg/L
3. 6-Benzylaminopurine	50 mg/L
4. Gibberellin A3	200 mg/L
5. Indole-3-acetic acid	50 mg/L
6. <i>trans,trans</i> -Abscisic acid	200 mg/L
7. <i>cis,trans</i> -Abscisic acid	200 mg/L
8. Jasmonic Acid	200 mg/L