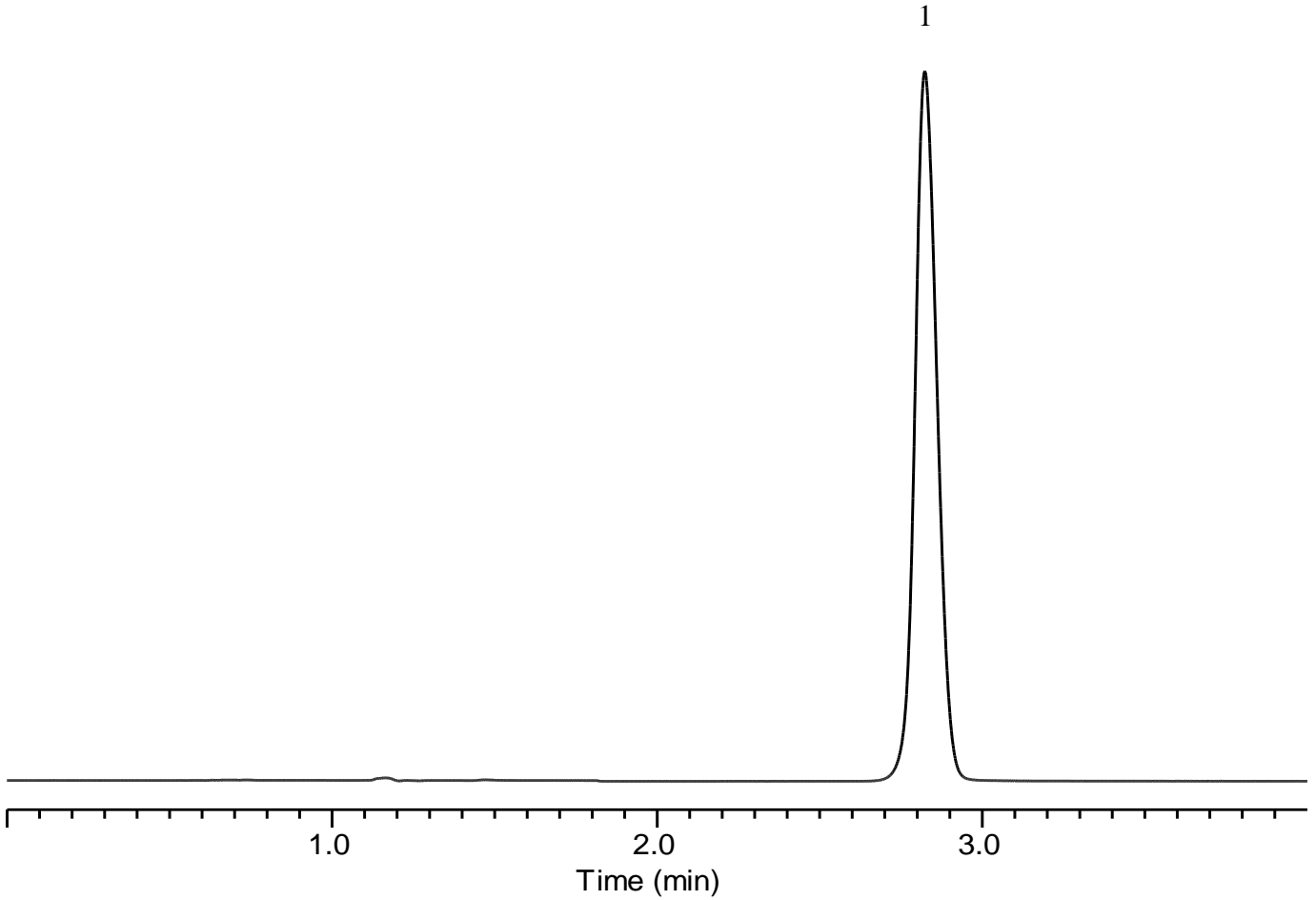


Analysis of Nortriptyline



Conditions

Column : InertSustain Cyano (5 μ m, 250 x 4.6 mm I.D.)
Column Cat. No. : 5020-89277
Eluent : A) CH₃CN
 B) CH₃OH
 C) Buffer*
 A/B/C = 40/43/17, v/v/v
Flow rate : 2.5 mL/min
Col. Temp. : 40 °C
Detection : UV 239 nm
Injection Vol. : 10 μ L
Sample : Standard

Analyte:

1. Nortriptyline 380 mg/L

Theoretical plates (1) : 7,988
 Symmetry factor (1) : 1.10

* Dissolve 1.63 g of monobasic potassium phosphate in 1 L of water, and adjust with 1 N potassium hydroxide to a pH of 6.7.