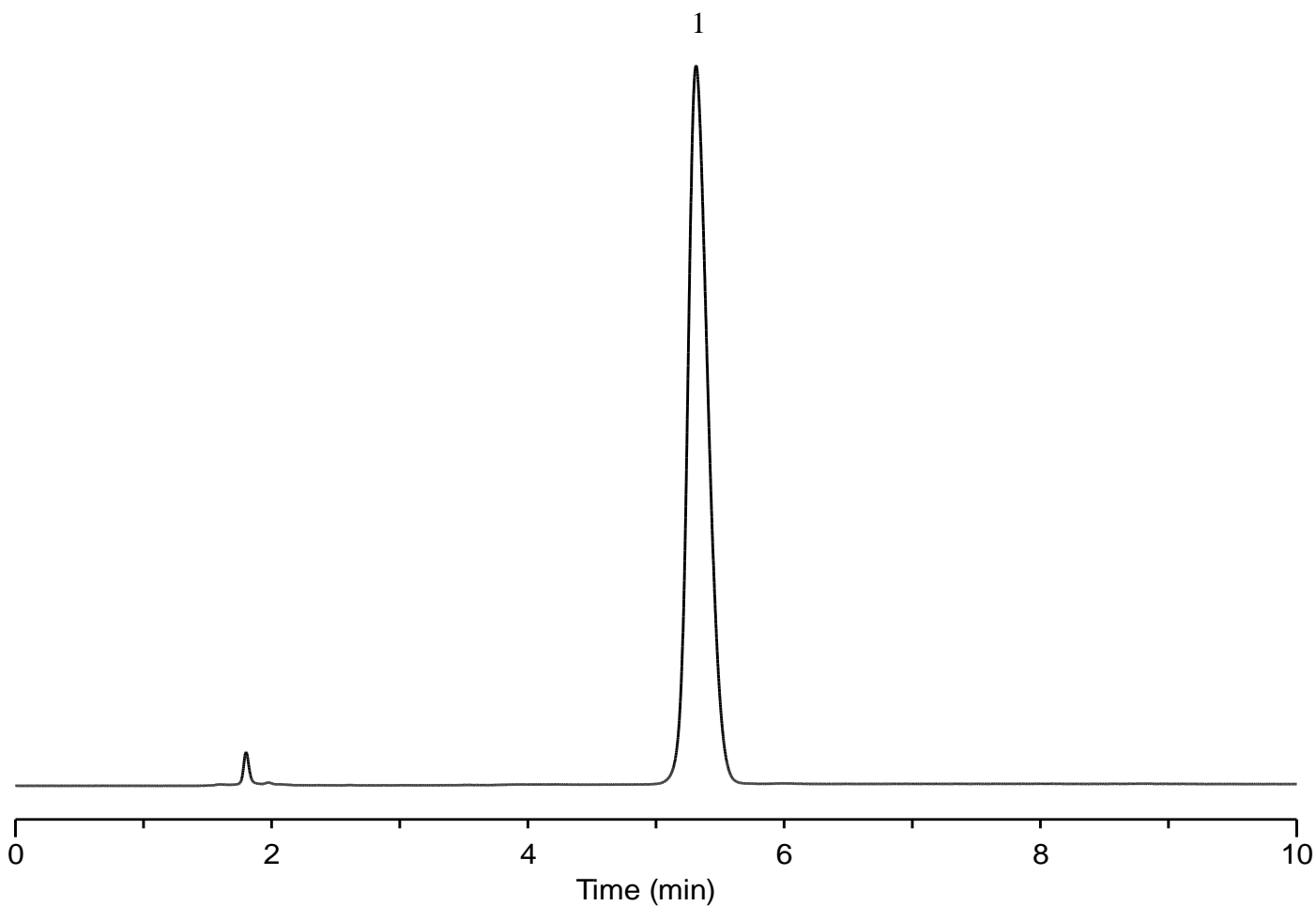


InertSearch™ for LC

Inertsil™ Applications

Analysis of Sertraline

Data No. LB611-0806



Conditions

Column : InertSustain Cyano (5 μ m, 250 x 4.6 mm I.D.)

Column Cat. No. : 5020-89277

Eluent : A) CH₃OH
B) 0.1% H₃PO₄ in H₂O
A/B = 50/50, v/v

Flow rate : 1.5 mL/min

Col. Temp. : 30 °C

Detection : UV 210 nm

Injection Vol. : 10 μ L

Sample : Standard

Analyte:

1. Sertraline 50 mg/L

Symmetry factor (1) : 1.24