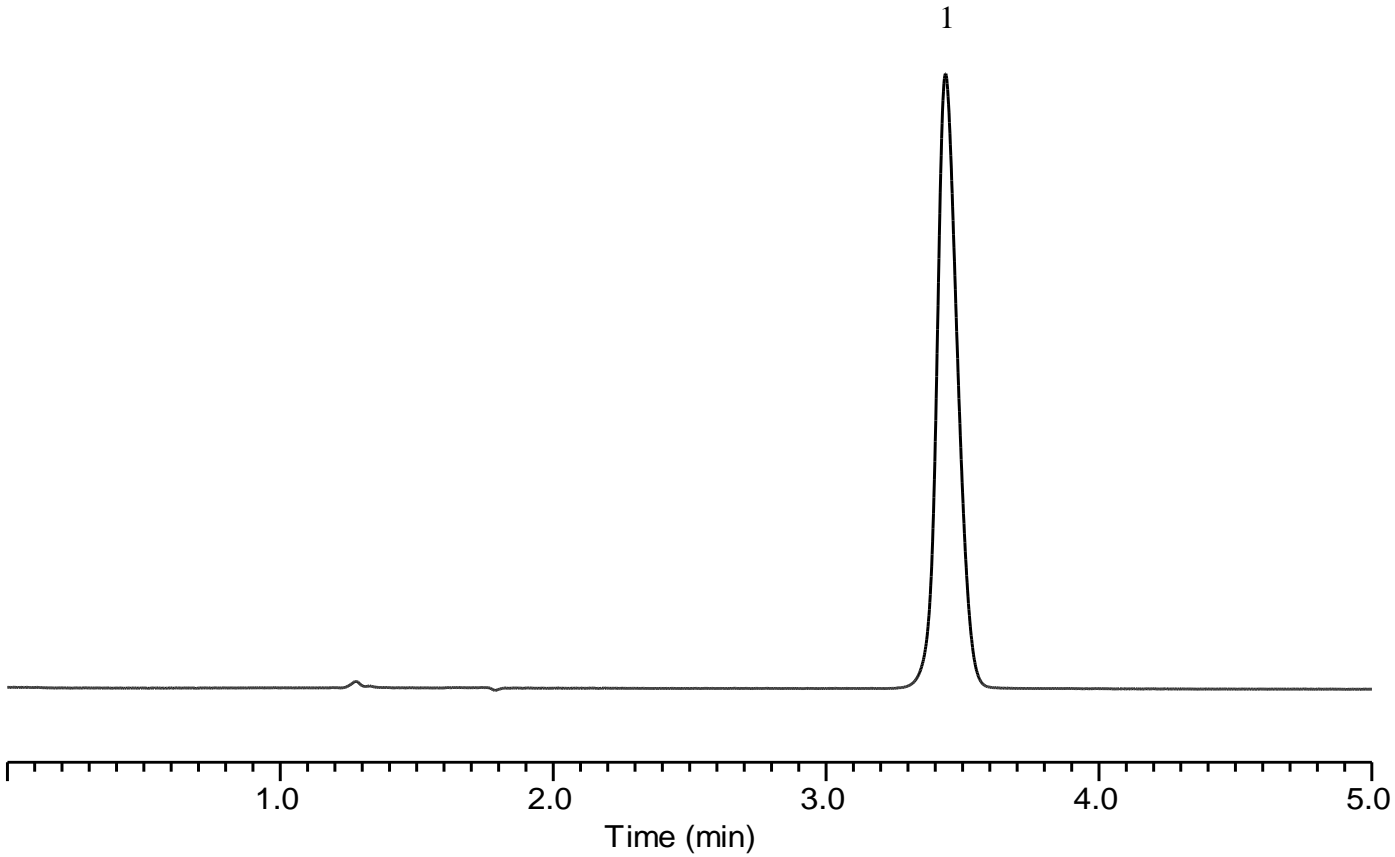


Analysis of Tetracaine



Conditions

Column : InertSustain Cyano (5 μ m, 250 x 4.6 mm I.D.)
Column Cat. No. : 5020-89277
Eluent : A) CH₃CN
 B) Buffer*
 A/B = 30/70, v/v
Flow rate : 2.0 mL/min
Col. Temp. : 40 °C
Detection : UV 280 nm
Injection Vol. : 10 μ L
Sample : Standard

Analyte:

1. Tetracaine 100 mg/L
 Theoretical plates (1) : 9,679
 Symmetry factor (1) : 1.16

* Prepare 0.01 M of dibasic ammonium phosphate in water, and adjust with phosphoric acid to a pH of 3.0.