

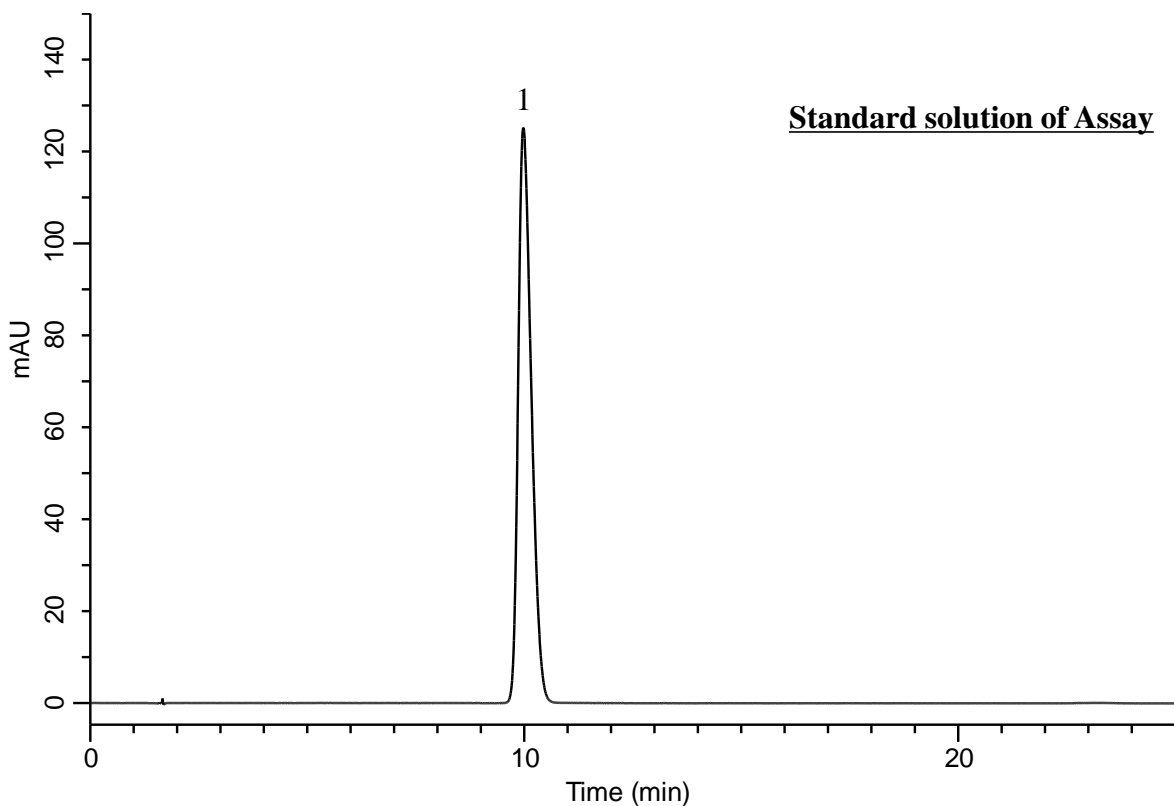
InertSearch™ for LC

Inertsil™ Applications

Analysis of Cromolyn

(Under the Condition of USP41-NF36, Cromolyn Sodium)

Data No. LB615-0812



Conditions

System : GL7700 HPLC system
Column : InertSustain C18 (5 μ m, 250 x 4.6 mm I.D.)
Column Cat. No. : 5020-07346
Eluent : CH₃OH/Buffer* = 20/80, v/v
Flow rate : 1.7 mL/min
Col. Temp. : 35 °C
Detection : UV 254 nm (PD7752 PDA Detector)
Injection Vol. : 20 μ L
Sample : Standard

Analyte:

1. Cromolyn 0.1 mg/mL

Symmetry factor (1) : 1.37 (< 2.0)

RSD of the peak area of 1 (%) (n=6)

: 0.01 (< 0.73)

* 2.1 g/L of sodium acetate in water.

Adjust with glacial acetic acid to a pH of 5.5.