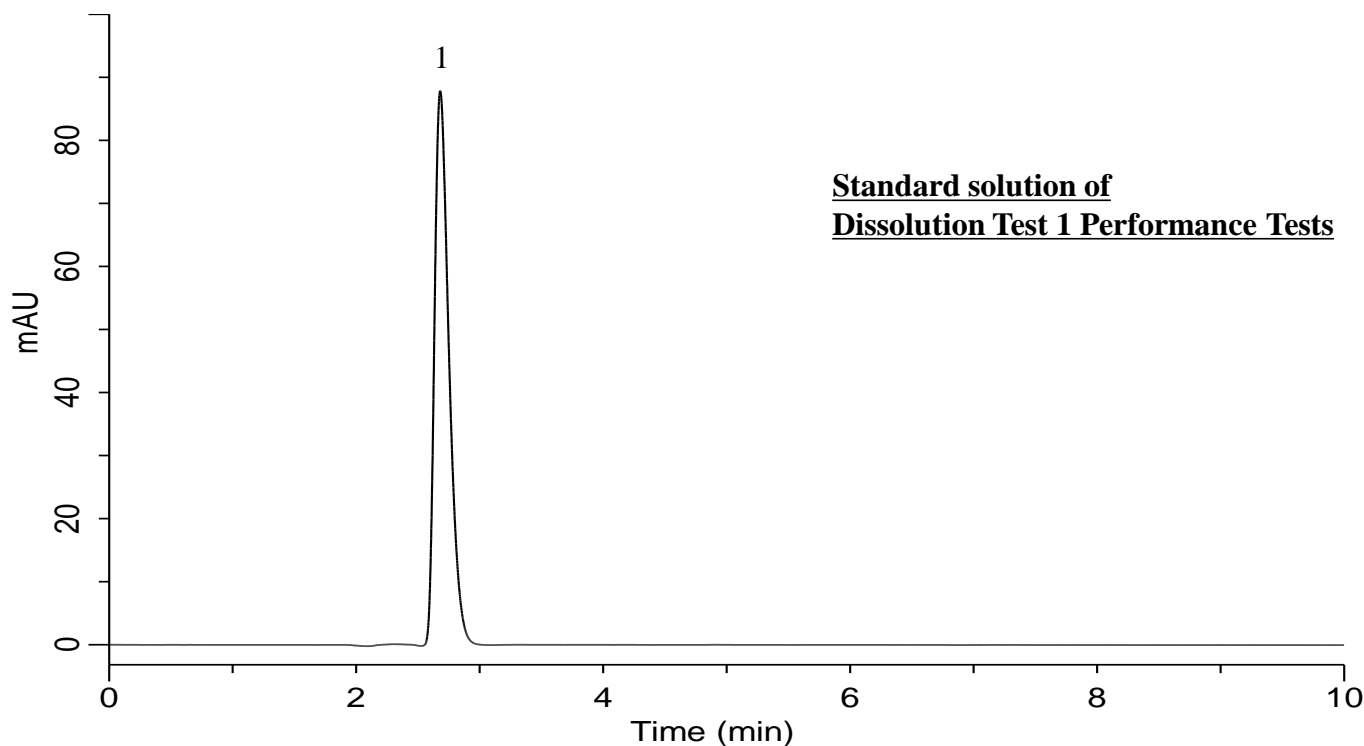


## Analysis of Venlafaxine hydrochloride

(Under the Condition of USP41-NF36, Venlafaxine Hydrochloride Extended-Release Capsules)



### Conditions

**Column** : InertSustain C18 (5  $\mu$  m, 250 x 4.6 mm I.D.)  
**Column Cat. No.** : 5020-07346  
**Eluent** : CH<sub>3</sub>CN/ TEA/ H<sub>2</sub>O = 450/4/550\*  
**Flow rate** : 1.0 mL/min  
**Col. Temp.** : 30 °C  
**Detection** : UV 274 nm (UV7750 UV Detector)  
**Injection Vol.** : 60  $\mu$  L  
**Sample** : Standard

\*Adjust with phosphoric acid to a pH of 3.5.

### Analyte:

1. Venlafaxine hydrochloride 0.05 mg/mL

Symmetry factor of (1) : 1.47(<2.5)  
 RSD of the peak area of 1 (%) (n=6)  
 : 0.01(<2.0)