

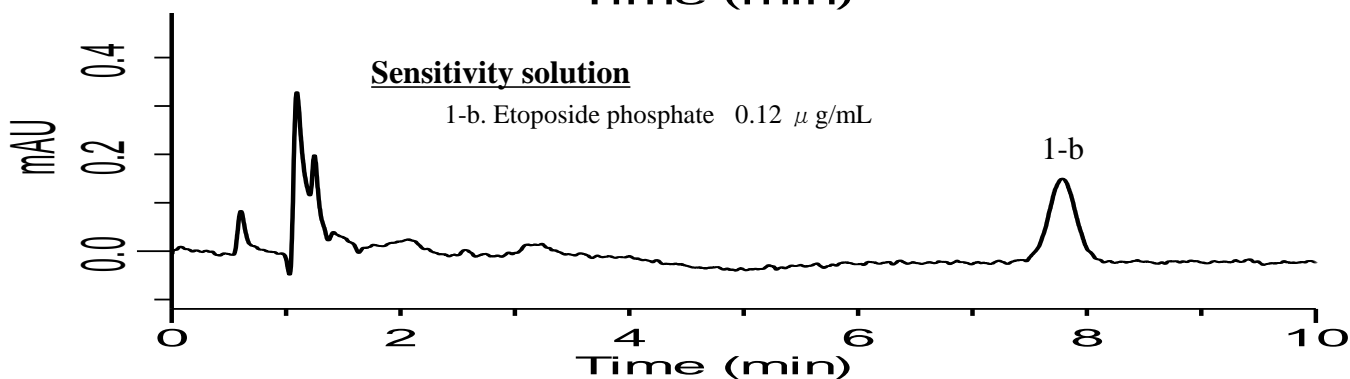
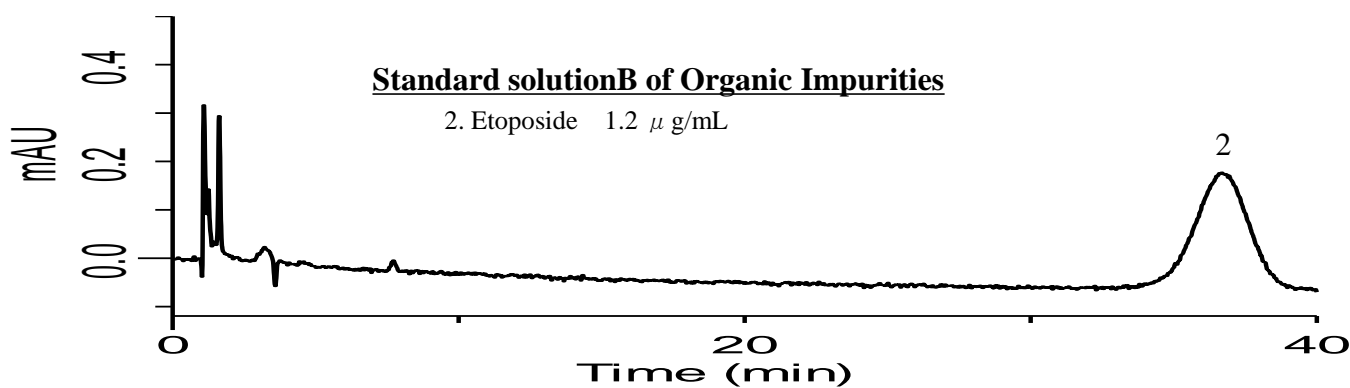
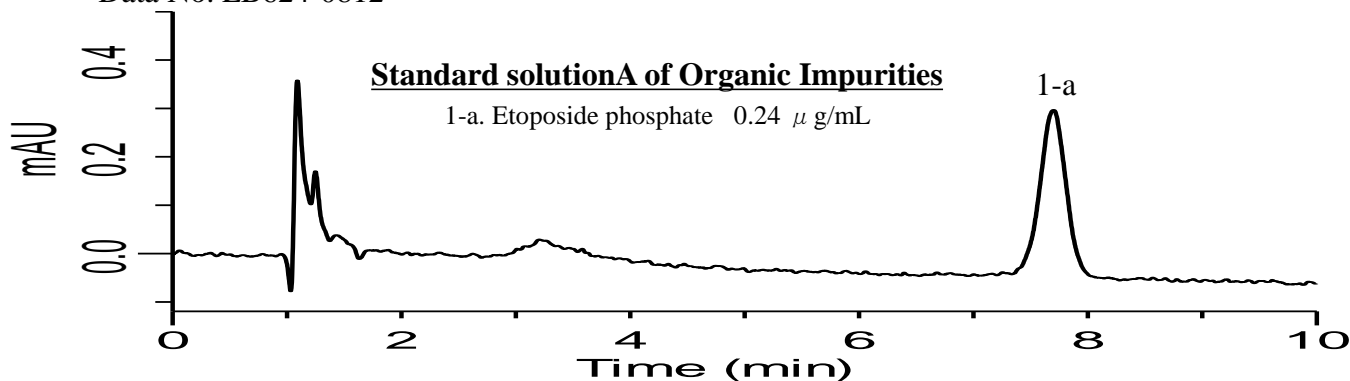
InertSearch for LC

Inertsil Applications

Analysis of Etoposide phosphate

(Under the Condition of draft for USP)

Data No. LB624-0812



Conditions

System : GL7700 HPLC system
Column : InertSustain Phenyl
(5 μ m, 150 x 4.6 mm I.D.)
Column Cat. No. : 5020-16327
Eluent : A) CH₃CN
B) SolutionA*
A/B = 15/85, v/v**
Flow Rate : 1.5 mL/min
Col. Temp. : 40 °C
Detection : UV 230 nm (PD7752 PDA Detector)
Injection Vol. : 25 μ L
Sample : Standard

Analyte

1. Etoposide phosphate
2. Etoposide

RSD of the peak area of 1-a (%) (n=6)
: 2.77 (≤ 10)

RSD of the peak area of 2 (%) (n=6)
: 2.85 (≤ 10)

S/N for 1-b : 41.3 (≥ 10)

* 2.3g/L of ammonium phosphate, monobasic in water.

** Acetonitrile and SolutionA (15 : 85). Adjust with phosphoric acid to a pH 2.5.