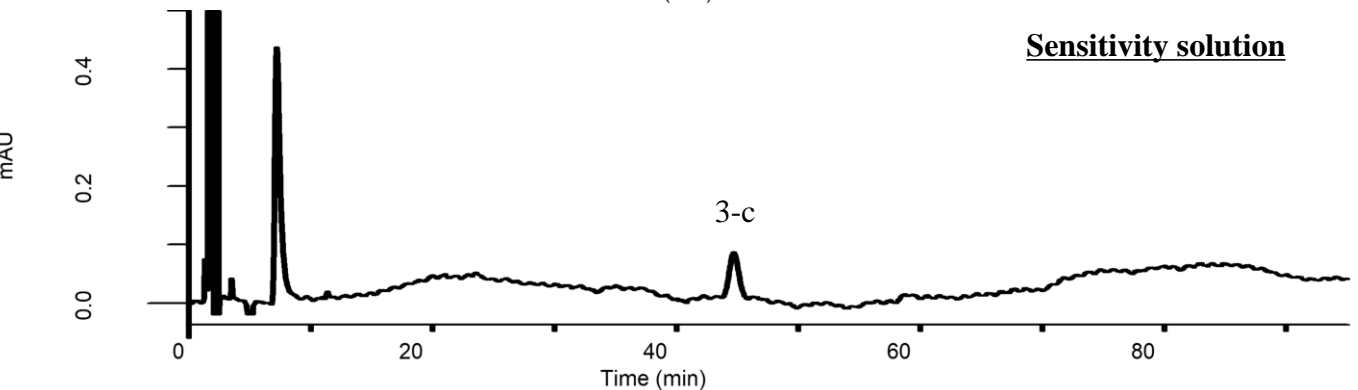
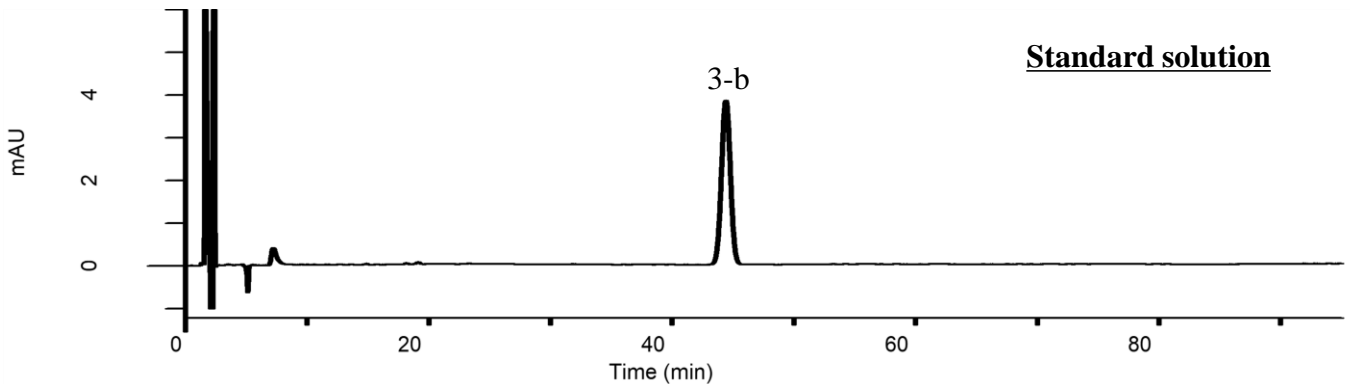
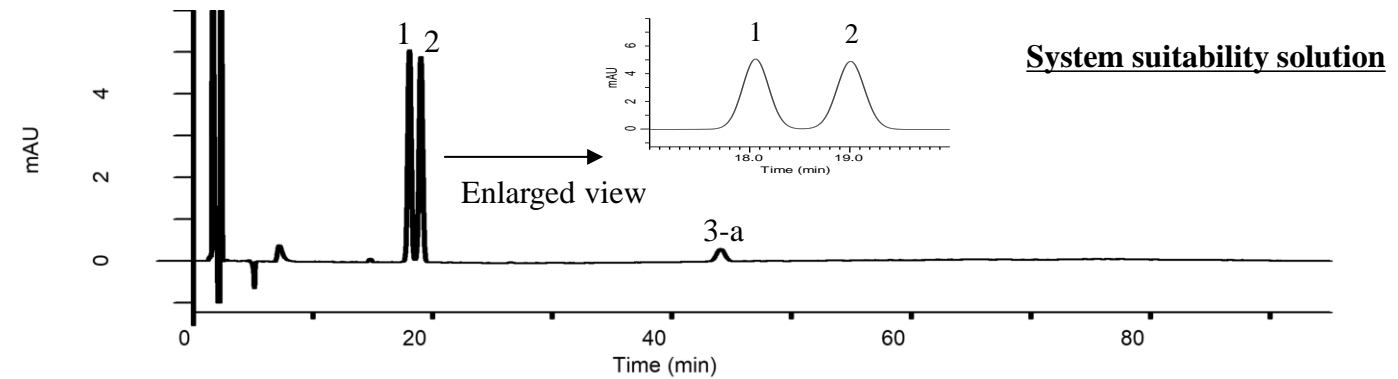


Analysis of Prasugrel hydrochloride



Conditions

System : GL7700 HPLC system
Column : InertSustain C18
 (3 μm, 150 x 4.6 mm I.D.)
Column Cat. No. : 5020-07445
Eluent : A) CH₃CN
 B) THF
 C) Buffer*
 A/B/C = 10/25/65, v/v/v
Flow Rate : 0.9 mL/min
Col. Temp. : 40 °C
Detection : UV 240 nm (UV7751 UV Detector)
Injection Vol. : 10 μL
Sample : Standard
 * 10 mM monobasic potassium phosphate in water.

Analyte

1. Desacetyl prasugrel diastereomer 1
 2. Desacetyl prasugrel diastereomer 2
 3. Prasugrel hydrochloride

Resolution (1,2) : 1.77
 RSD of the peak area of 3-b (%) (n=6) : 1.05
 S/N for 3-c : 21.1