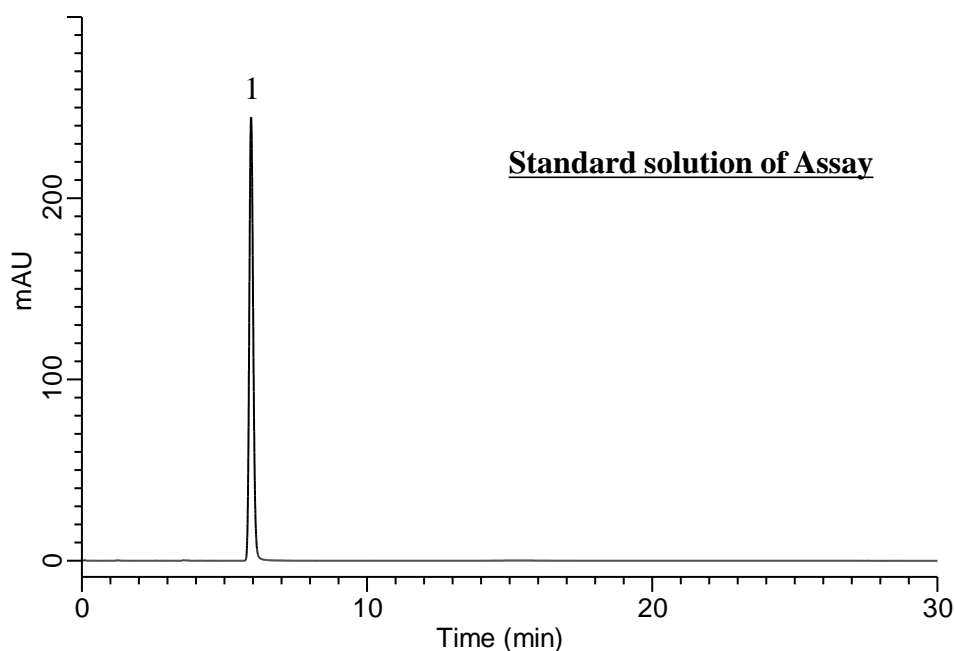


## Analysis of Copovidone

(Under the Condition of the draft for the Japanese Pharmacopoeia, (7) 2-Pyrrolidone)



### Conditions

**System** : GL7700 HPLC system  
**Guard Column** : Inertsil ODS-3  
 (5  $\mu$  m, 10 x 4.0 mm I.D.)  
**Column Cat. No.** : 5020-19003  
**Column** : Inertsil ODS-3  
 (5  $\mu$  m, 150 x 4.6 mm I.D.)  
**Column Cat. No.** : 5020-01731  
**Eluent** : A) CH<sub>3</sub>OH  
 B) H<sub>2</sub>O  
 A/B = 1/19, v/v  
**Flow Rate** : 0.8 mL/min  
**Col. Temp.** : 40 °C  
**Detection** : UV 205 nm (UV7750 UV Detector)  
**Injection Vol.** : 20  $\mu$  L  
**Sample** : Standard

### Analyte:

1. 2-Pyrrolidone 45 mg/L

Symmetry factor : 1.17 ( $\leq$  1.5)  
 RSD of the peak area (%) (n=6)  
 : 0.60 ( $\leq$  2.0)