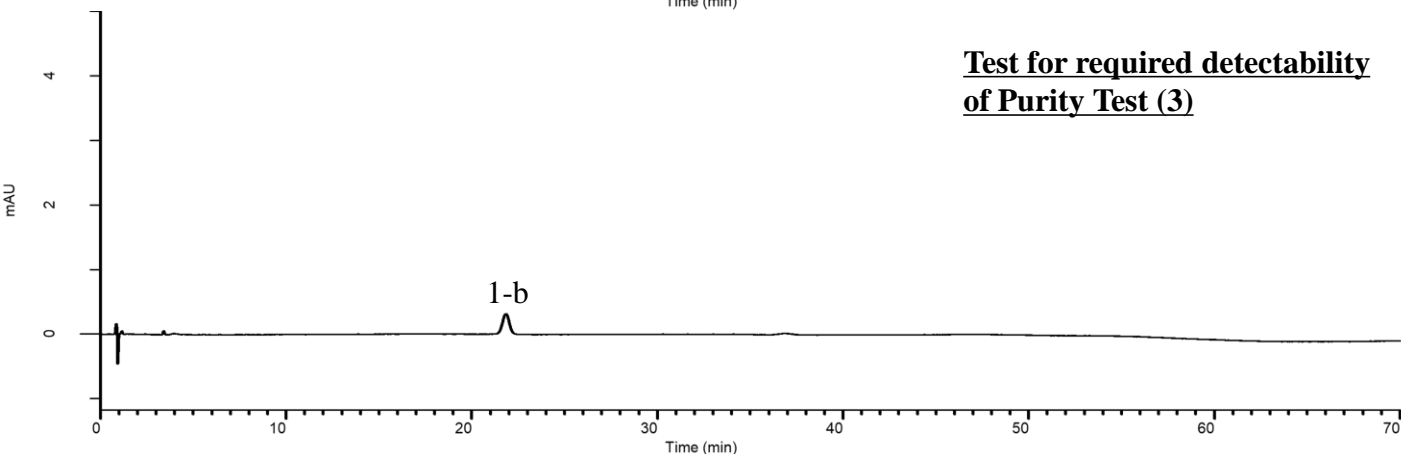
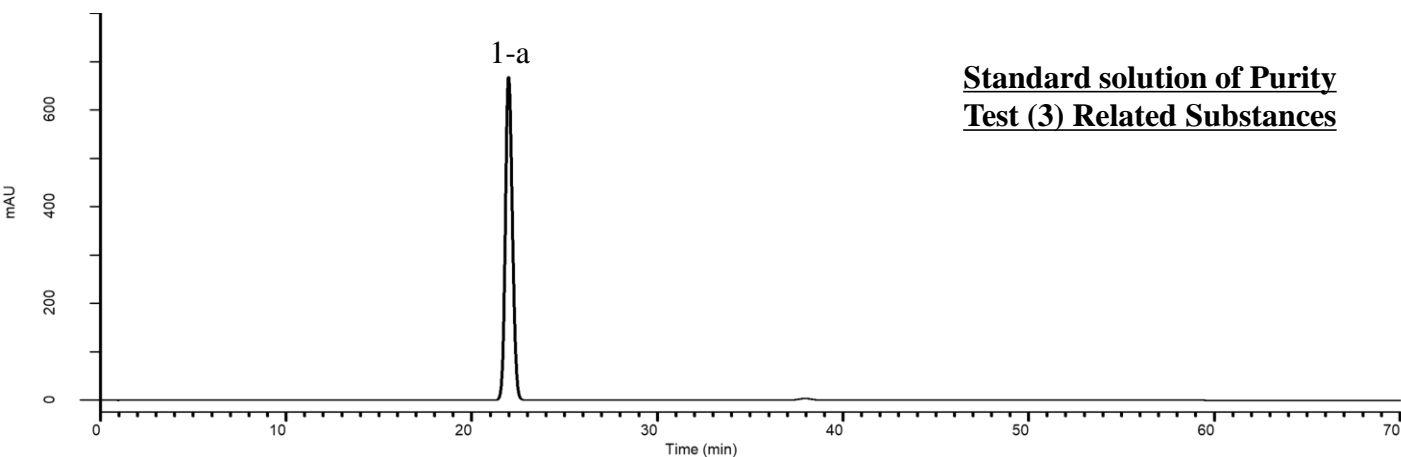


# Analysis of Rosuvastatin Calcium

(Under the Condition of the draft for the Japanese Pharmacopoeia,  
Rosuvastatin Calcium)



## Conditions

**System** : GL7700 HPLC system  
**Column** : Inertsustain C18 (3  $\mu$  m HP, 150 x 3.0 mm I.D.)  
**Column Cat. No.** : 5020-14425  
**Eluent** : A) H<sub>2</sub>O/CH<sub>3</sub>CN/1 % TFA = 70/29/1  
 B) H<sub>2</sub>O/CH<sub>3</sub>CN/1 % TFA = 24/75/1

Time(min)	A (vol%)	B (vol%)
0	100	0
30	100	0
50	60	40
60	0	100
70	0	100

## Analyte:

1. Rosuvastatin Calcium  
 700 mg/L (1-a) or 0.35 mg/L (1-b)

RSD of the peak area of 1-a (%) (n=5) : 0.02 ( $\leq$  2.0)

The peak area ratio of 1-b to 1-a (%)  
 : (0.025  $\leq$ ) 0.044 ( $\leq$  0.075)

**Flow rate** : 0.75 mL/min  
**Col. Temp.** : 40 °C  
**Detection** : UV 242 nm (UV7750 UV Detector)  
**Injection Vol.** : 10  $\mu$  L  
**Sample** : Standard