

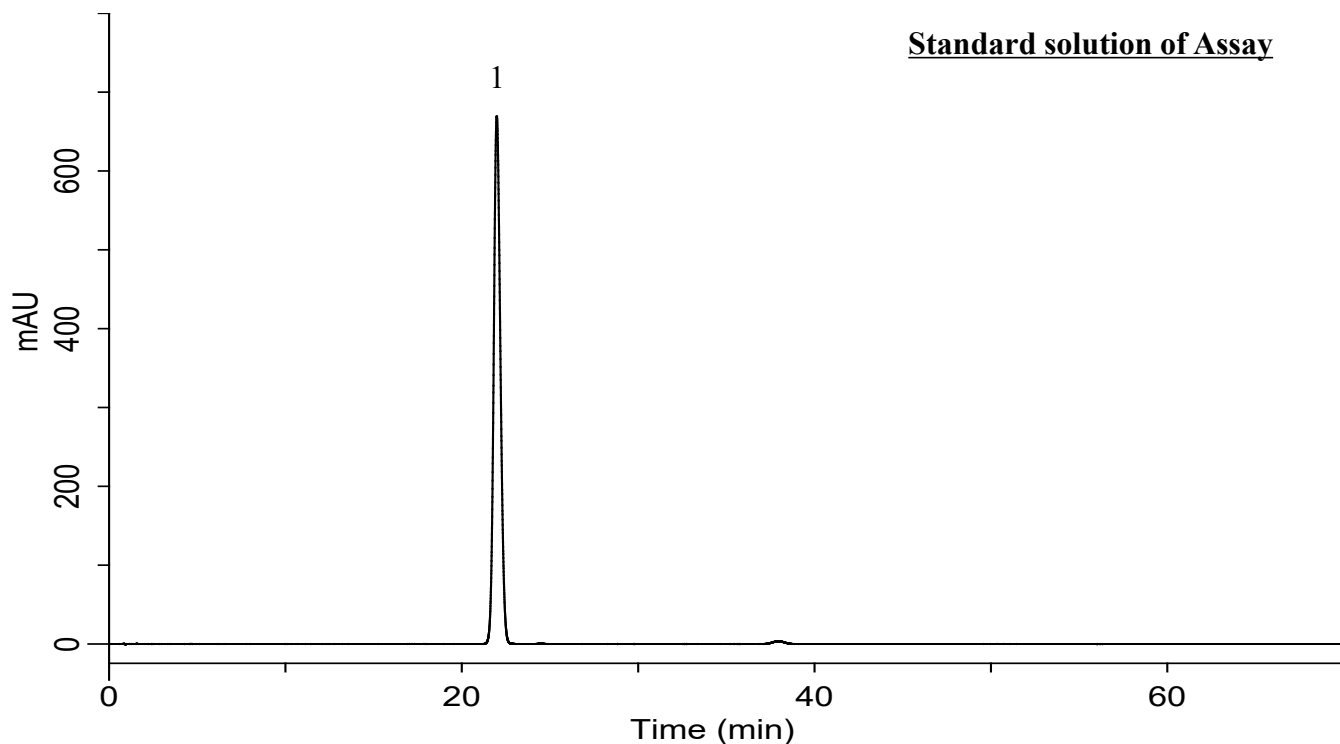
InertSearch for LC

Inertsil Applications

Analysis of Rosuvastatin Calcium

(Under the Condition of the Japanese Pharmacopoeia 18th Edition, Rosuvastatin Calcium)

Data No. LB641-0812



Conditions

System : GL7700 HPLC system
Column : Inertsustain C18 (3 μ m HP, 150 x 3.0 mm I.D.)
Column Cat. No. : 5020-14425
Eluent : A) H₂O/CH₃CN/1 % TFA = 70/29/1, v/v/v
B) H₂O/CH₃CN/1 % TFA = 24/75/1, v/v/v

| Time(min) | A (vol%) | B (vol%) |
|-----------|----------|----------|
| 0 | 100 | 0 |
| 30 | 100 | 0 |
| 50 | 60 | 40 |
| 60 | 0 | 100 |
| 70 | 0 | 100 |

Analyte:

1. Rosuvastatin Calcium 700 mg/L

RSD of the peak area of 1 (%) (n=5)
: 0.02 (\leq 2.0)

Flow rate : 0.75 mL/min
Col. Temp. : 40 °C
Detection : UV 242 nm (UV7750 UV Detector)
Injection Vol. : 10 μ L
Sample : Standard