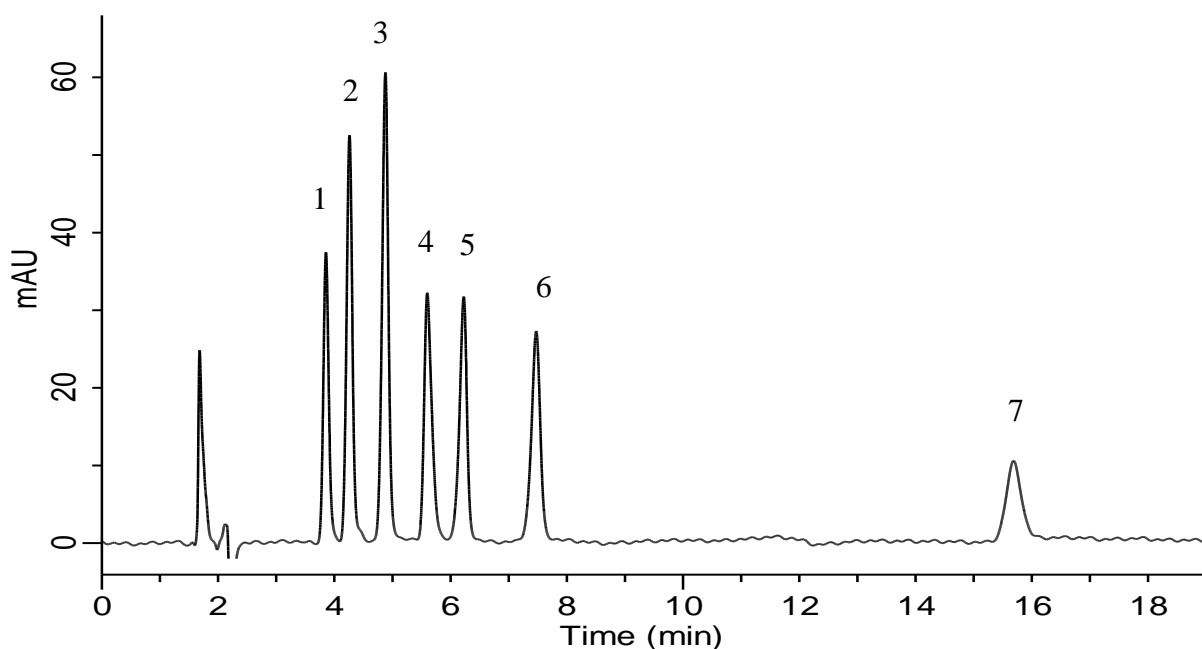


## Analysis of Dipeptides



### Conditions

**Column** : InertSustain Amide  
 (1.9  $\mu$  m, 150 x 2.1 mm I.D.)  
**Column Cat. No.** : 5020-88819  
**Eluent** : A) CH<sub>3</sub>CN  
 B) 10 mM HCOONH<sub>4</sub> + 0.1% HCOOH in H<sub>2</sub>O  
 A/B = 75/25, v/v  
**Flow rate** : 0.2 mL/min  
**Col. Temp.** : 40 °C  
**Detection** : UV 220 nm  
**Injection Vol.** : 1  $\mu$  L  
**Sample** : Standard

### Analyte:

1. Ala-Phe	100 mg/L
2. Ala-Val	100 mg/L
3. Ala-Tyr	100 mg/L
4. Ala-Ala	100 mg/L
5. Ala-Gly	100 mg/L
6. Ala-Gln	100 mg/L
7. Ala-His	100 mg/L