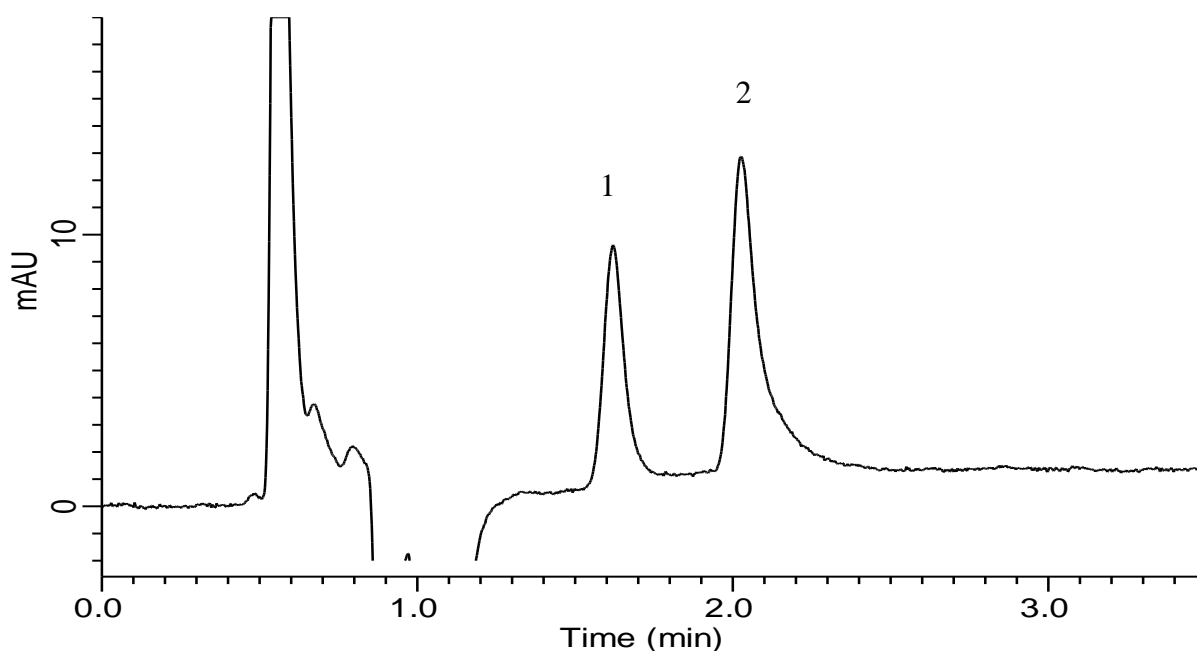


## Analysis of Glyphosate and Glufosinate



### Conditions

**Column** : InertSustain Amide  
 (1.9  $\mu$  m, 50 x 2.1 mm I.D., Metal-free hardware)

**Column Cat. No.** : 5020-

**Eluent** : A) CH<sub>3</sub>CN  
 B) H<sub>2</sub>O  
 C) HCOOH  
 D) Diethylenetriamine  
 A/B/C/D = 65/35/0.4/0.4, v/v/v/v

**Flow rate** : 0.2 mL/min

**Col. Temp.** : 40 °C

**Detection** : UV 220 nm

**Injection Vol.** : 1  $\mu$  L

**Sample** : Standard

### Analyte:

1. Glufosinate	2500 mg/L
2. Glyphosate	2500 mg/L