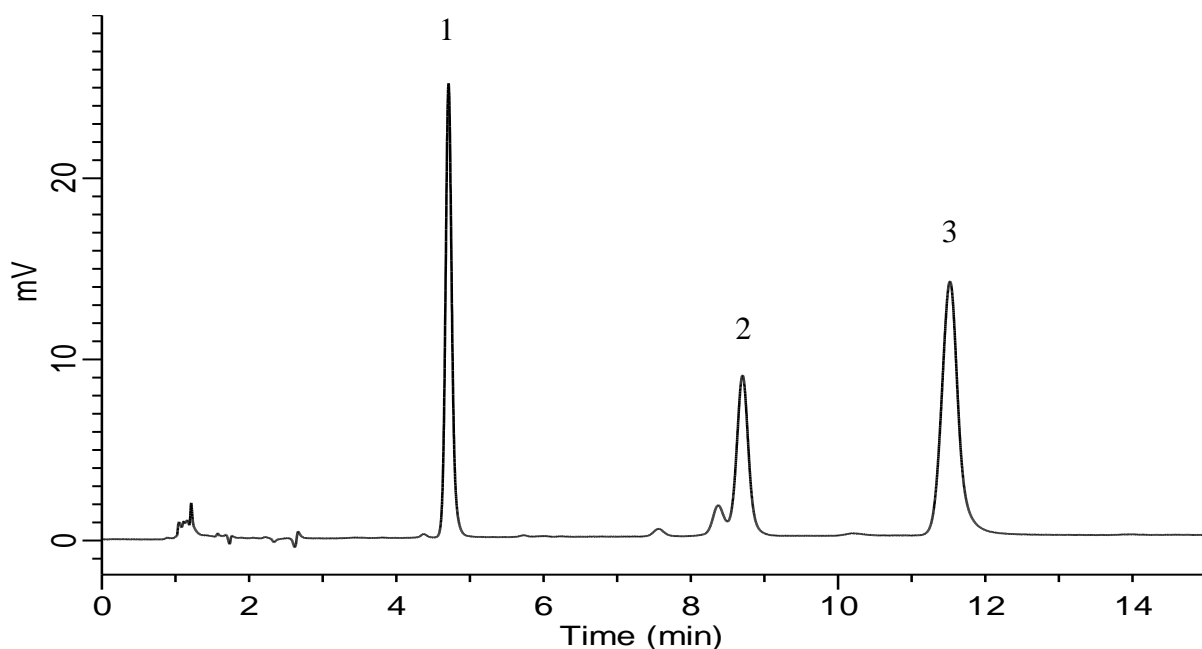


## Analysis of UTP and its related compounds



### Conditions

**Column** : InertSustain Amide  
 (1.9  $\mu$  m, 150 x 2.1 mm I.D., Metal-free hardware)  
**Column Cat. No.** : 5020-  
**Eluent** : A) CH<sub>3</sub>CN  
 B) H<sub>2</sub>O  
 C) HCOOH  
 D) Diethylenetriamine  
 A/B/C/D = 70/30/0.2/0.2, v/v/v/v  
**Flow rate** : 0.3 mL/min  
**Col. Temp.** : 40 °C  
**Detection** : UV 254 nm  
**Injection Vol.** : 0.5  $\mu$  L  
**Sample** : Standard

### Analyte:

1. Uridine monophosphate (UMP)  
 100 mg/L  
 2. Uridine diphosphate (UDP)  
 100 mg/L  
 3. Uridine triphosphate (UTP)  
 100 mg/L