

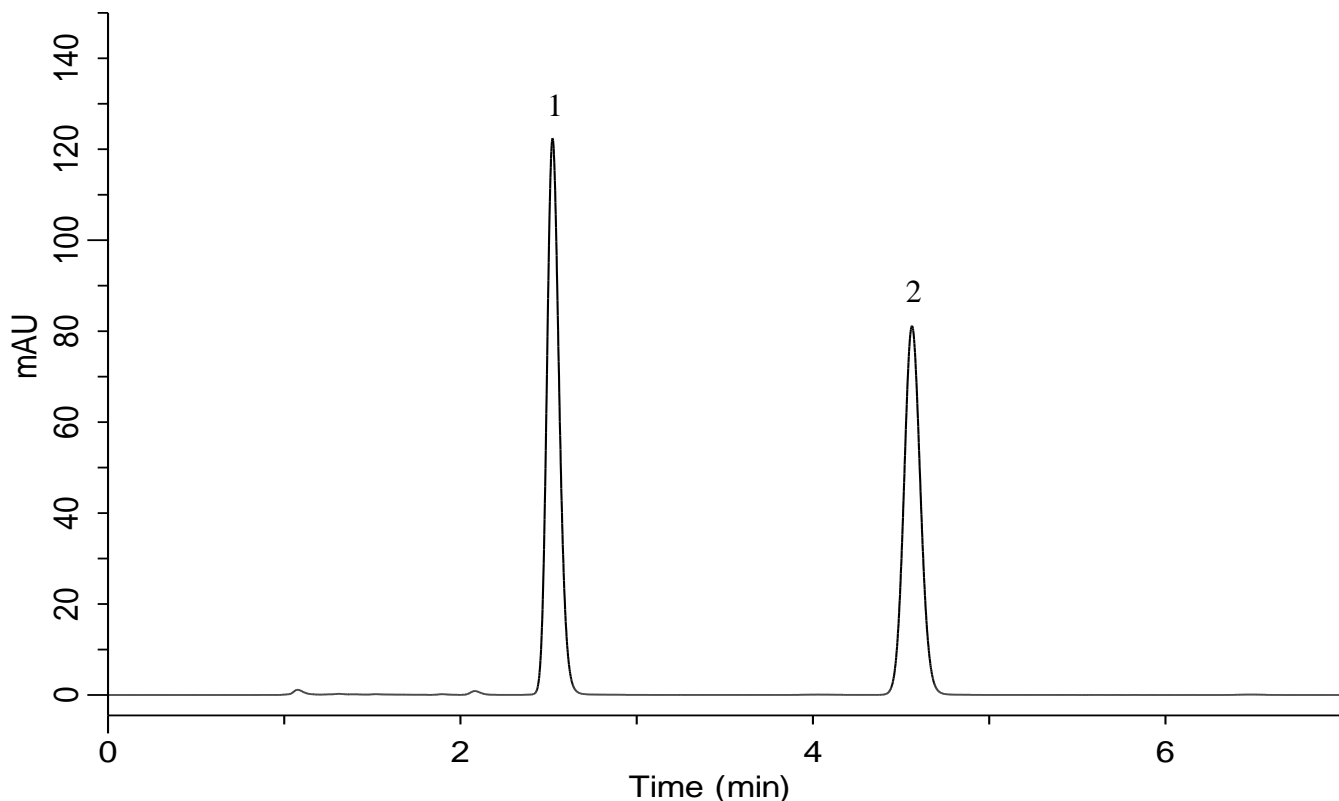
InertSearch for LC

Inertsil Applications

Analysis of Tamsulosin hydrochloride

(Under the Condition of the Japanese Pharmacopoeia)

Data No. LB659-0591



Conditions

System : GL7700 HPLC system
Column : Inertsil ODS-HL (5 μ m, 150 x 4.0 mm I.D.)
Column Cat. No. : 5020-87123
Eluent : A) CH₃CN
 : B) Solution*
 : A/B=50/50, v/v
Flow rate : 0.84 mL/min
Col. Temp. : 40 °C
Detection : UV 225 nm (UV7750 UV Detector)
Injection Vol. : 10 μ L
Sample : Standard

Analyte:

1. Tamsulosin hydrochloride 25 mg/L
2. p-Hydroxybenzoic acid n-propyl ester 50 mg/L

Resolution (1, 2) : 13.4 (\geq 12)

*Dissolve 4.4 mL of Perchloric acid and 1.5 g of Sodium hydroxide in 950 mL of water.
Adjust pH 2.0 by Sodium hydroxide solution(1 mol/L).
Add water to make 1,000 mL.