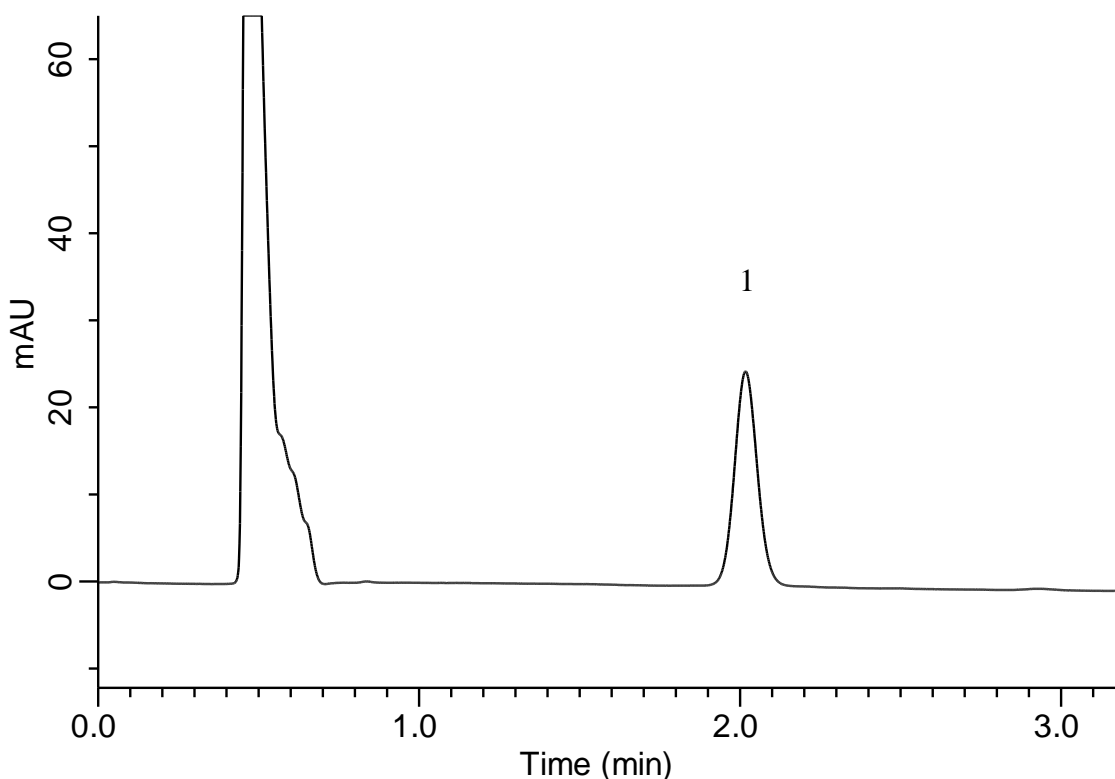


## Analysis of Rosuvastatin calcium

(Under the condition of the Japanese Pharmacopoeia (JP) )



### Conditions

**System** : GL7700 HPLC system  
**Column** : InertSustainSwift C18  
 (5  $\mu$  m 50 x 4.6 mm I.D.)  
**Column Cat. No.** : 5020-88023  
**Eluent** : H<sub>2</sub>O/ CH<sub>3</sub>CN/ H<sub>3</sub>PO<sub>4</sub> = 600/400/1, v/v/v (premix)  
**Flow Rate** : 1.25 mL/min  
**Col. Temp.** : 25 °C  
**Detection** : UV 242 nm (PD7752 PDA Detector)  
**Injection Vol.** : 20  $\mu$  L  
**Sample** : Standard

### Analyte:

1. Rosuvastatin calcium 2.5 mg/L

	GLS	JP
Retention time (min)	2.02	approx. 2
Theoretical plate numer (N)	3,831	$\geq$ 1,900
Tailing factor	1.07	1.0 – 1.4