

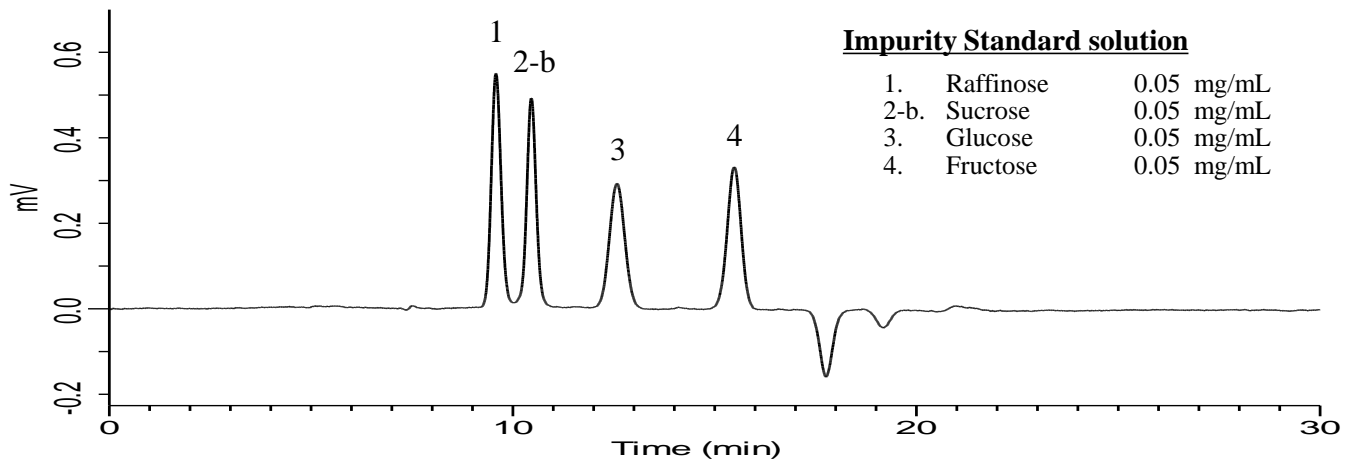
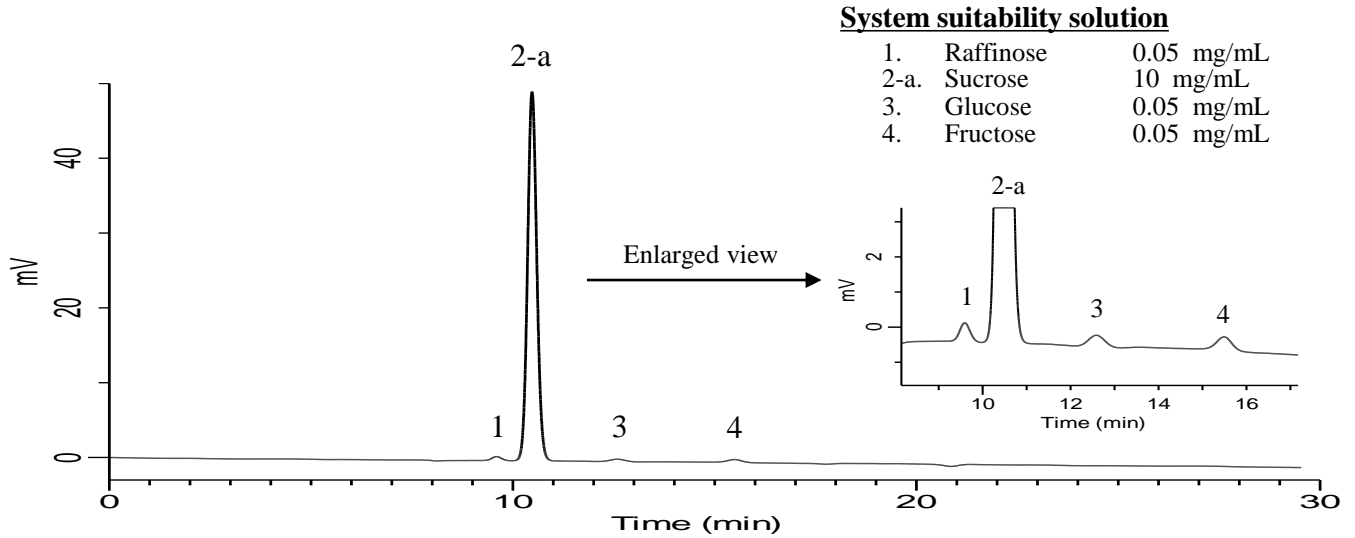
InertSearch for LC

Inertsil Applications

Analysis of Sucrose

(Under the condition of the PDG (Pharmacopeial Discussion Group) Stage 2 Drafts)

Data No. LB670-1030



Conditions

System : Chromaster
Column : InertSphere Sugar-2
(9 μ m, 300 x 7.8 mm I.D.)
Column Cat. No. : 5020-11000
Eluent : H₂O
Flow Rate : 0.5 mL/min
Col. Temp. : 80 °C
Detection : RI (5450 RI Detector)
Injection Vol. : 10 μ L
Sample : Standard

Analyte:

1. Raffinose : Relative retention time (1 to 2-a) : 0.92 (about 0.9)
2. Sucrose
3. Glucose : Relative retention time (3 to 2-a) : 1.19 (about 1.2)
4. Fructose : Relative retention time (4 to 2-a) : 1.48 (about 1.6)

System suitability solution

Peak-to-valley ratio (1, 2-a) : 31.07 (\geq 2.5)
Resolution (2-a, 3) : 3.86 (\geq 1.5)

Impurity Standard solution

RSD of the Peak area of 1 (%) (n=6) : 1.16 (\leq 5.0)
RSD of the Peak area of 2-b (%) (n=6) : 1.76 (\leq 5.0)
RSD of the Peak area of 3 (%) (n=6) : 0.61 (\leq 5.0)
RSD of the Peak area of 4 (%) (n=6) : 1.19 (\leq 5.0)