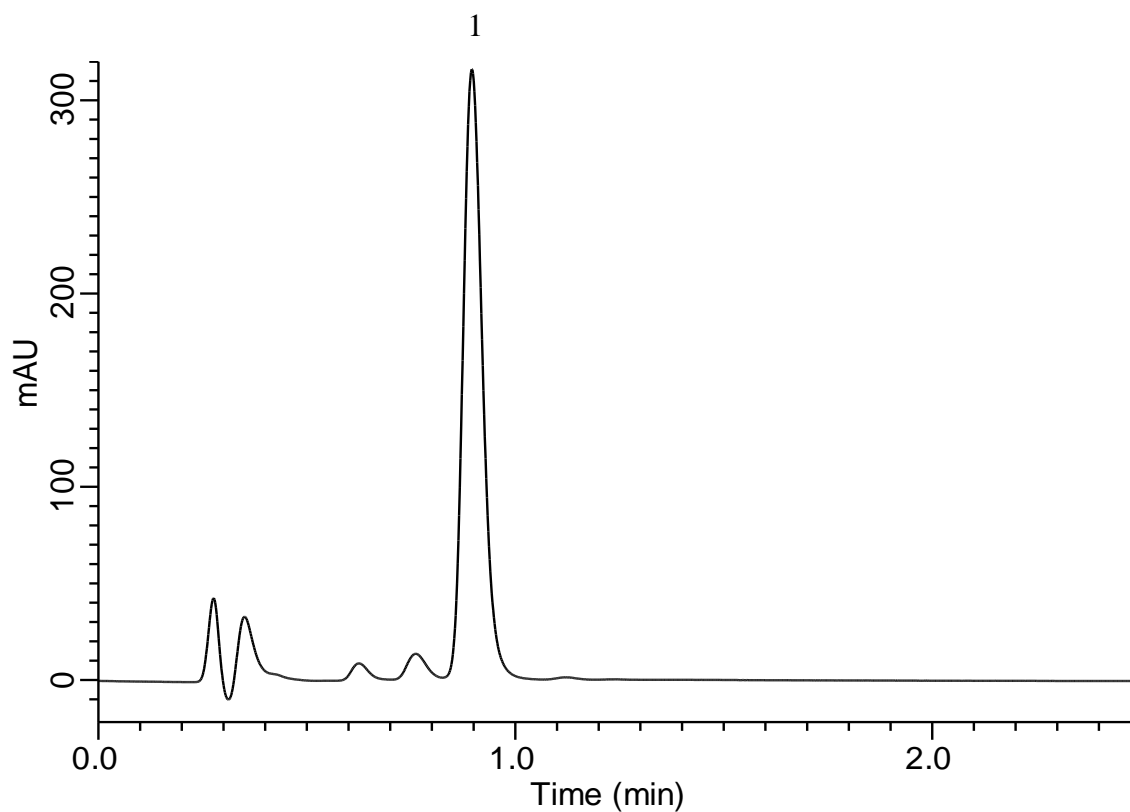


## Analysis of Limonene



### Conditions

**System** : Chromaster  
**Column** : InertSustain C18  
 (3  $\mu$  m HP, 3.0 x 50 mmI.D.)  
**Column Cat. No.** : 5020-14422  
**Eluent** : A) CH<sub>3</sub>CN  
 B) H<sub>2</sub>O  
 A/B = 85/15, v/v  
**Flow Rate** : 1.0 mL/min  
**Col. Temp.** : 40 °C  
**Detection** : UV 210 nm (5430 Diode Array Detector)  
**Injection Vol.** : 10  $\mu$  L  
**Sample** : Standard

### **Analyte:**

1. ( $\pm$ )-Limonene 100 mg/L