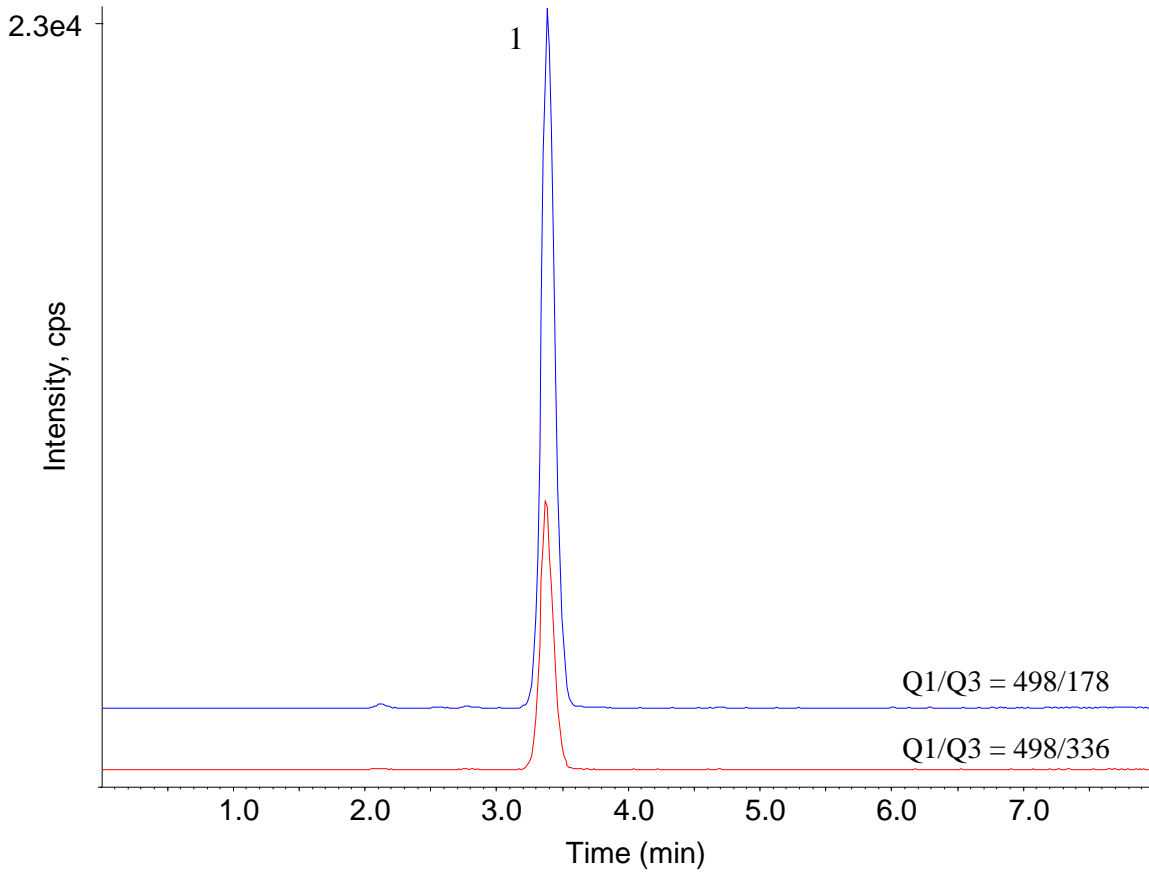


Analysis of Validamycin



Conditions

Column : InertSustain C18 HP
 (3 μ m, 100 x 2.1 mm I.D.)
Column Cat. No. : 5020-14414
Eluent : A) 5 mM CH₃COONH₄ in H₂O
 B) 5 mM CH₃COONH₄ in CH₃OH

Analyte :

1. Validamycin 0.1 mg/L

Q1	Q3	DP	EP	CE	CXP
498	178	96	11	37	6
498	336	96	10	33	6

Time (min)	A%	B%
0.0	100	0
2.5	100	0
6.5	5	95
8.0	5	95

Flow Rate : 0.3 mL/min
Col. Temp. : 40 °C
Detection : LC-MS/MS (4000Q TRAP: ESI, Positive, SRM)

CUR	CAD	IS	TEM	GS1	GS2
30	8	5000	400	40	60

Injection Vol. : 5 μ L
Sample : Standard