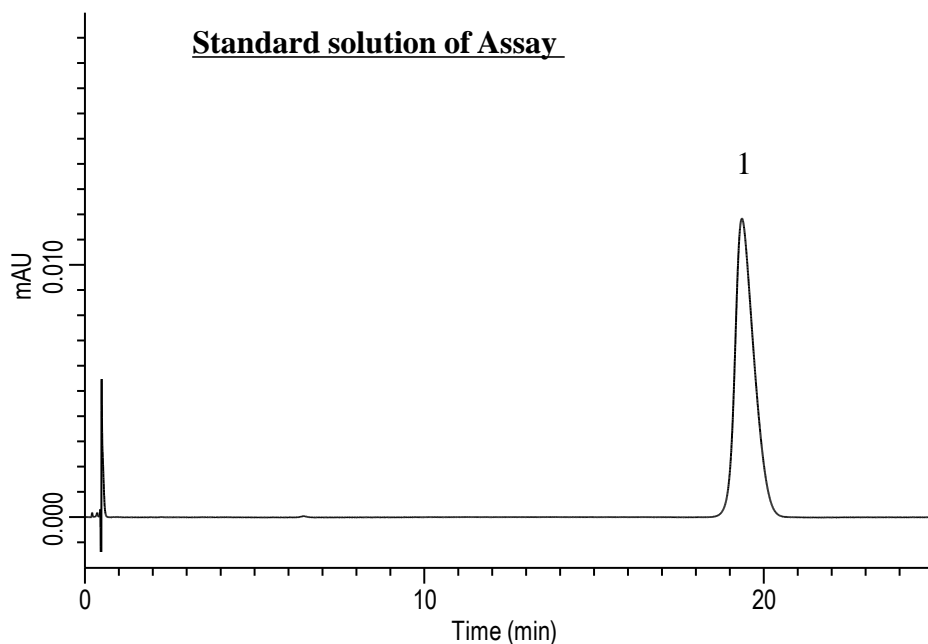


Analysis of Cetylpyridinium chloride (CPC)

(Under the condition of USP42-NF37-903)



Conditions

System : LC-2040C 3D Plus
Column : InertSustain AX-C18
 (5 μ m, 100 x 2.1 mm I.D.)
Column Cat. No. : 5020-91001
Eluent : A) 0.1 % TFA in H₂O
 B) 0.1 % TFA in CH₃CN
 A/B = 62.5/37.5, v/v
Flow Rate : 0.6 mL/min
Col. Temp. : 40 °C
Detection : UV 258 nm
Injection Vol. : 2 μ L
Sample : Standard

Analyte:

| | |
|--------------------------------|-----------------------|
| 1. Cetylpyridinium | 0.25 mg/mL as CPC |
| Tailing factor | : 1.41 (\leq 1.5) |
| RSD of the peak area (%) (n=6) | : 0.40 (\leq 0.73) |