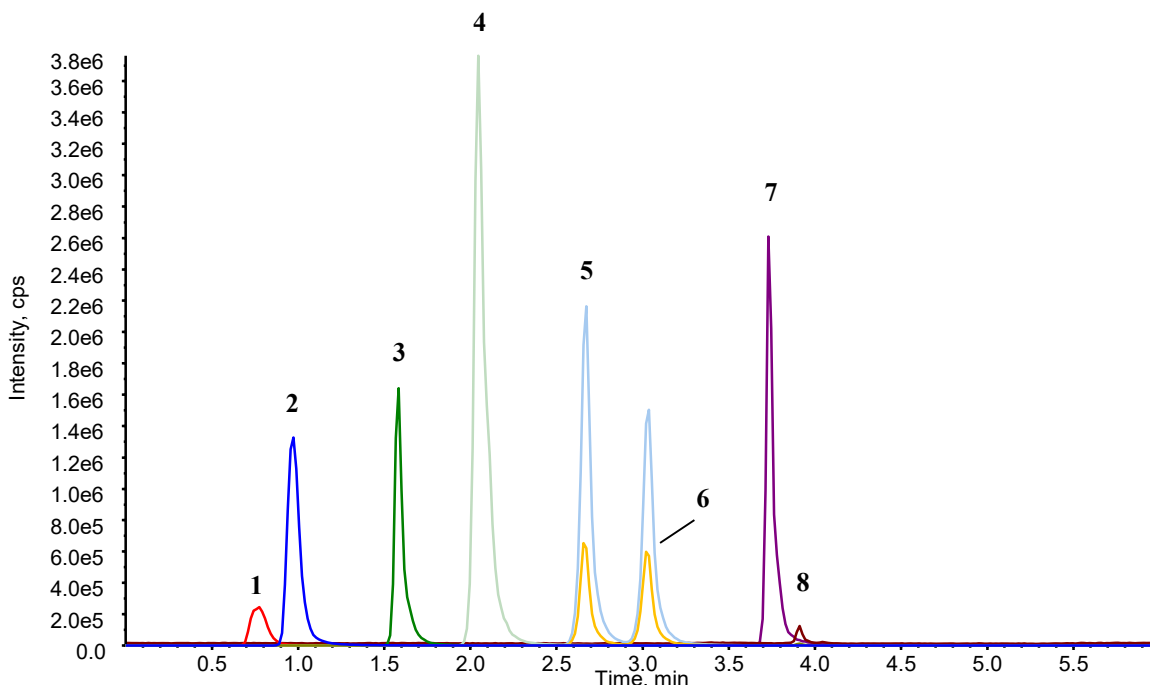


InertSearch for LC

Inertsil Applications

Analysis of Nitrosamines (InertSustain AQ-C18)

Data No. LB692 - 1054



Conditions

System : Nexera XR UHPLC system
4000 Q TRAP
Column : InertSustain AQ-C18 HP
(3 μ m, 50 x 2.1 mm I.D.)
Column Cat. No. : 5020-89921
Eluent : A) 0.1 % HCOOH in CH₃OH
B) 0.1 % HCOOH in H₂O

Analyte:

1. N-Nitrosodimethylamine (NDMA)	Q1/Q3 75/58
2. N-Nitrosomorpholine (NMOR)	117/87
3. N-Nitrosodiethylamine (NDEA)	103/75
4. N-Nitrosoethylisopropylamine (NEIPA)	117/75
5. N-Nitrosodiisopropylamine (NDIPA)	131/89
6. N-Nitrosodi-n-propylamine (NDPA)	131/43
7. N-Nitrosodi-n-butylamine (NDBA)	159/103
8. N-Nitrosodiphenylamine (NDPhA)	171/171

Time (min)	A (vol%)	B (vol%)
0.0	10	90
0.4	35	65
1.0	40	60
2.5	50	50
2.6	73	27
3.5	78	22
3.6	90	10
4.5	90	10
4.6	10	90
6.0	10	90

(each 1.0 mg/L in solvent)

Flow Rate : 0.4 mL/min
Col. Temp. : 40 °C
Detection : LC/MS/MS
(4000Q TRAP : APCI, Positive, SRM)
CUR CAD NC TEM GS1 ihe
50 7 5 300 70 on

Injection Vol. : 5 μ L
Sample : standard

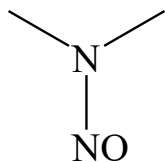
InertSearch for LC

Inertsil Applications

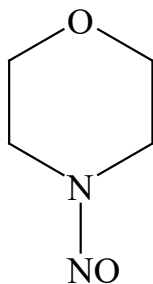
Analysis of Nitrosamines

Data No. LB692 - 1054

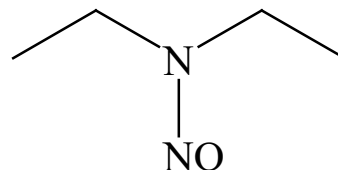
Chemical Structure



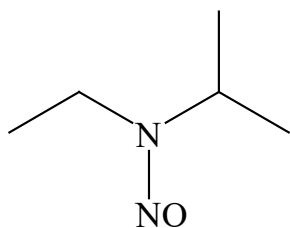
1. N-Nitrosodimethylamine
(NDMA)



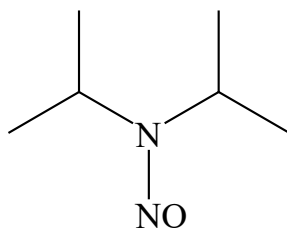
2. N-Nitrosomorpholine
(NMOR)



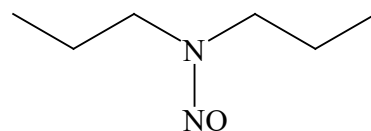
3. N-Nitrosodiethylamine
(NDEA)



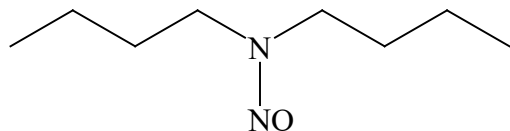
4. N-Nitrosoethylisopropylamine
(NEIPA)



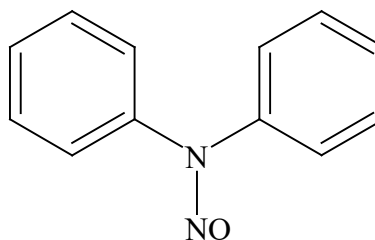
5. N-Nitrosodiisopropylamine
(NDIPA)



6. N-Nitrosodi-n-propylamine
(NDPA)



7. N-Nitrosodi-n-butylamine
(NDBA)



8. N-Nitrosodiphenylamine
(NDPhA)

Structures are created using Chemistry 4-D Draw which is provided by ChemInnovation Software, Inc.