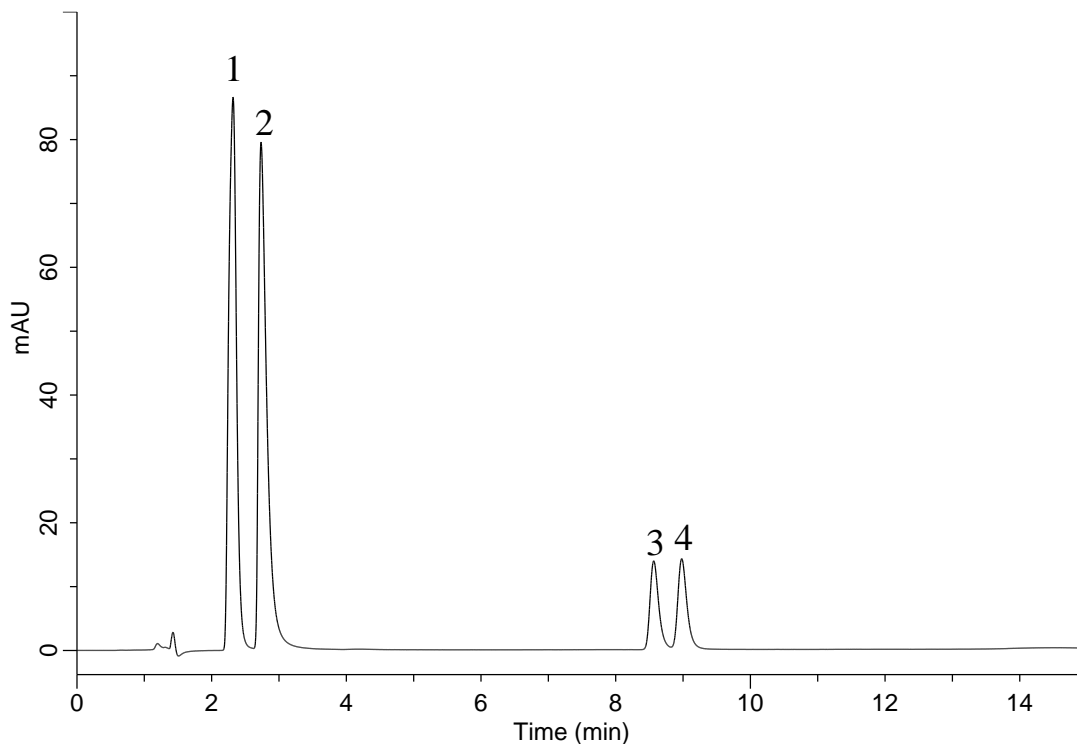


Analysis of Preservatives and Sweetener



Conditions

System : Chromaster HPLC system
Column : InertCore Plus C18
 (2.6 μ m, 150 x 4.6 mm I.D.)
Column Cat. No. : 5020-17522
Eluent : A) CH₃CN
 B) 0.1% H₃PO₄ in H₂O
 A/B = 15/85, v/v
Flow Rate : 1.0 mL/min
Col. Temp. : 40 °C
Detection : UV 210 nm
Injection Vol. : 10 μ L
Sample : Standard

Analyte:
 1. Caffeine 10 mg/mL
 2. Saccharin 10 mg/mL
 3. Sorbic acid 10 mg/mL
 4. Benzoic acid 10 mg/mL