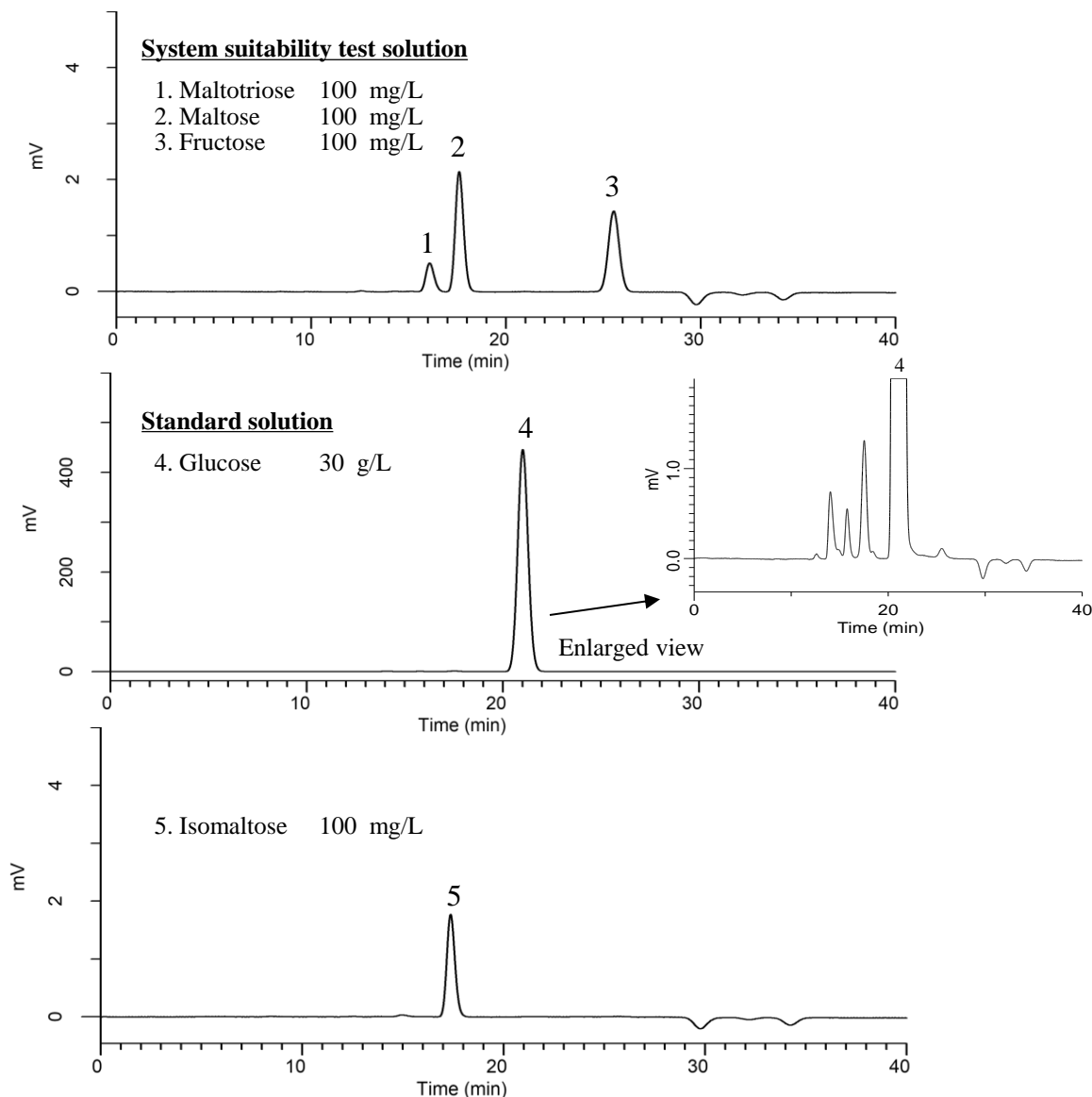


Analysis of Glucose

(Under the condition of the Japanese Pharmacopoeia 18, Purified Glucose)



Conditions

System : Chromaster HPLC system
Column : InertSphere Sugar-2
 (9 μm, 300 x 7.8 mm I.D.)
Column Cat. No. : 5020-11000
Eluent : H₂O
Flow Rate : 0.3 mL/min
Col. Temp. : 85 °C
Detection : RI (5450 RI Detector)
Injection Vol. : 20 μL
Sample : Standard

Analyte:

1. Maltotriose : Relative retention time (1 to 4) : 0.77 (about 0.7)
 2. Maltose : Relative retention time (2 to 4) : 0.84 (about 0.8)
 3. Fructose : Relative retention time (3 to 4) : 1.22 (about 1.3)
 4. Glucose
 5. Isomaltose : Relative retention time (5 to 4) : 0.83 (about 0.8)

System suitability solution

Resolution (1, 2) : 1.93 (≥ 1.3)

Standard solution

RSD of the Peak area of 4 (%) (n=6) : 0.14 (≤ 1.0)