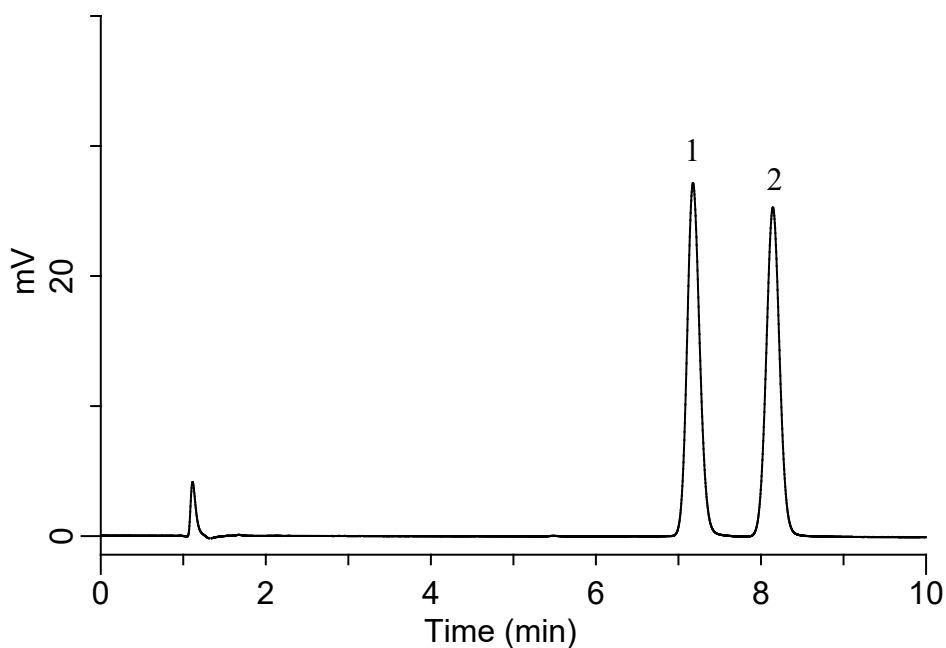


# InertSearch™ for LC

Inertsil® Applications

## Analysis of Chlorpheniramine maleate

Data No. LB701-0812



### Conditions

**System** : Chromaster HPLC system (HITACHI)  
**Column** : Inertsil ODS-4 (GL Sciences)  
(5  $\mu$  m, 150 x 4.0 mm I.D.)  
**Column Cat. No.** : 5020-03935  
**Eluent** : A) CH<sub>3</sub>CN  
B) 7 mM Sodium dodecyl sulfate in (0.1% H<sub>3</sub>PO<sub>4</sub> in H<sub>2</sub>O)  
A/B = 50/50, v/v  
**Flow Rate** : 0.9 mL/min  
**Col. Temp.** : 40 °C  
**Detection** : UV 260 nm  
**Injection Vol.** : 10  $\mu$  L  
**Sample** : Standard

### Analyte:

1. Chlorpheniramine 30 mg/L  
2. *p*-Hydroxy benzoic acid *iso*-amyl ester 6.7 mg/L