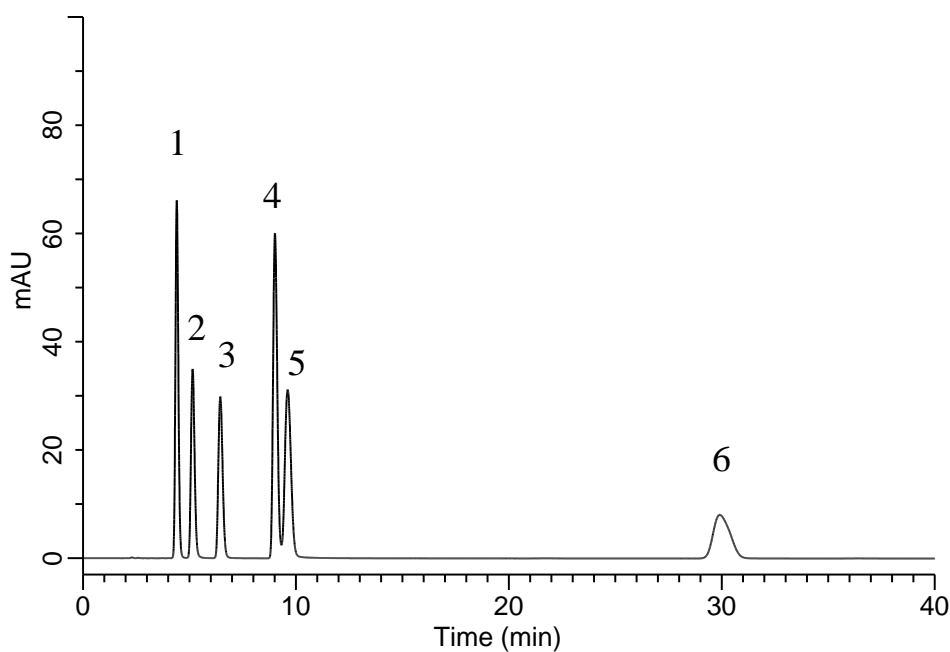


Analysis of ATP related compounds



Conditions

System : Chromaster HPLC system
Column : InertSustain C30
 (5 μ m, 250 x 4.6 mm I.D.)
Column Cat. No. : 5020-17145
Eluent : 20 mM K_2HPO_4 in H_2O (pH7.0, H_3PO_4)
Flow Rate : 1.5 mL/min
Col. Temp. : 40 $^{\circ}C$
Detection : UV 260 nm
Injection Vol. : 10 μ L
Sample : Standard

Analyte:

1. 5'-IMP	100 mg/L
2. 5'-AMP	100 mg/L
3. 5'-ADP	100 mg/L
4. Hypoxanthine	100 mg/L
5. 5'-ATP	100 mg/L
6. Inosine	100 mg/L