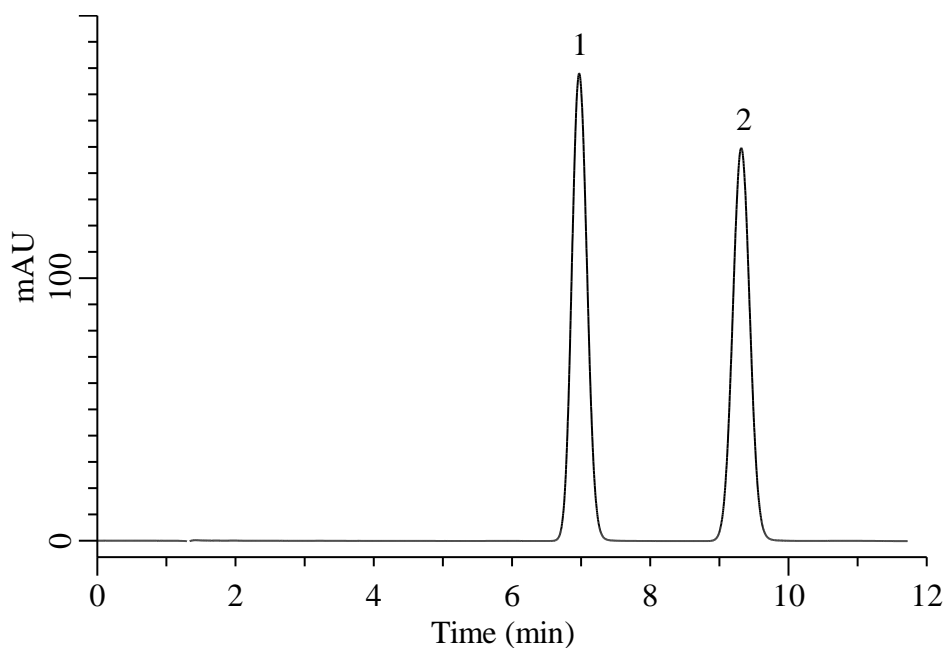


Analysis of Acetylsalicylic acid



Conditions

System : Primade HPLC system (HITACHI)
Column : InertSustain C18 (GL Sciences)
 (5 μ m, 150 x 4.0 mm I.D.)

Column Cat. No. : 5020-07335

Eluent : A) CH₃OH
 B) 0.1% H₃PO₄ in H₂O
 A/B = 35/65, v/v

Flow Rate : 0.95 mL/min

Col. Temp. : 40 °C

Detection : UV 254 nm

Injection Vol. : 10 μ L

Sample : Standard

Analyte:

1. Acetylsalicylic acid 1000 mg/L
 2. Methyl *p*-Hydroxybenzoate 50 mg/L