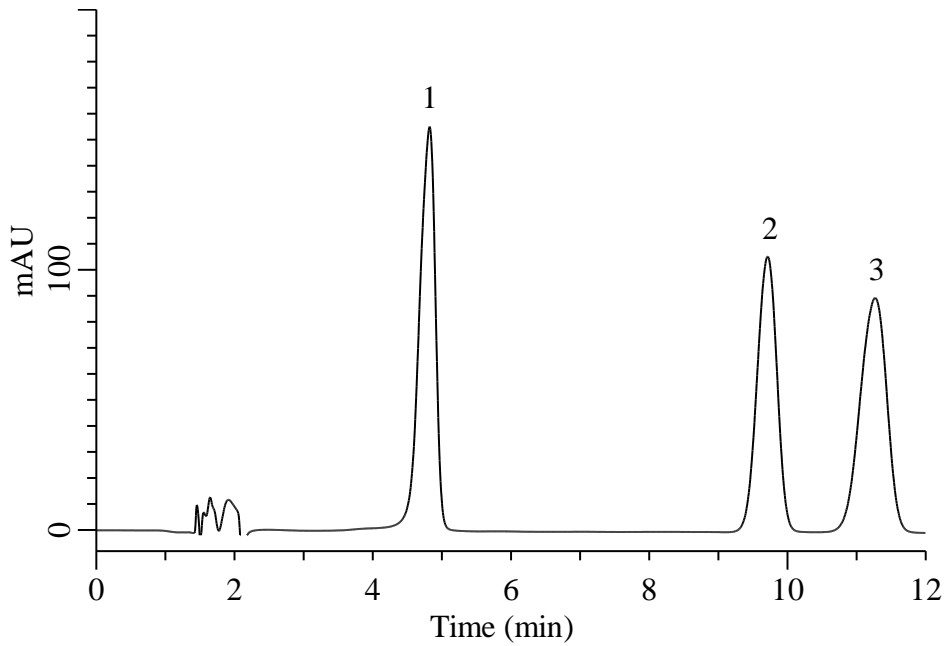


## Analysis of Acetaminophen



### Conditions

**System** : Primade HPLC system (HITACHI)  
**Column** : InertSustain C18 (GL Sciences)  
           (5  $\mu$  m, 150 x 4.0 mm I.D.)  
**Column Cat. No.** : 5020-07335  
**Eluent** : A) CH<sub>3</sub>CN  
           B) 0.1% H<sub>3</sub>PO<sub>4</sub> in H<sub>2</sub>O  
           A/B = 7/93, v/v  
**Flow Rate** : 0.9 mL/min  
**Col. Temp.** : 40 °C  
**Detection** : UV 275 nm  
**Injection Vol.** : 10  $\mu$  L  
**Sample** : Standard

### Analyte:

1. Acetaminophen	300 mg/L
2. <i>p</i> -Hydroxybenzoic acid	100 mg/L
3. Caffeine	100 mg/L