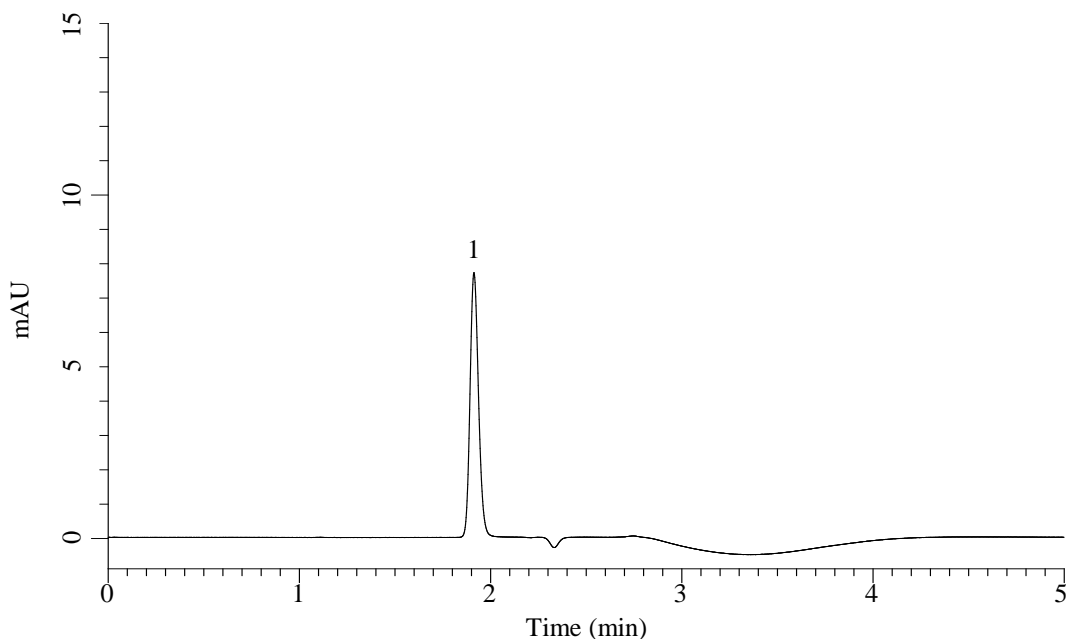


InertSearch for LC

Inertsil Applications

Analysis of Taurine (2-Aminoethanesulfonic acid)

Data No. LB728-0806



Conditions

Column : InertSustain AX-C18 (GL Sciences Inc.)
(3 μ m, 150 x 4.6 mm I.D.)

Column Cat. No. : 5020-91051

Eluent : 0.1% HCOOH in H₂O

Flow Rate : 1.0 mL/min

Col. Temp. : 40 °C

Detection : RI

Injection Vol. : 2.5 μ L

Sample : Standard

Analyte:

1. Taurine (2-Aminoethanesulfonic acid)

(10 g/L)