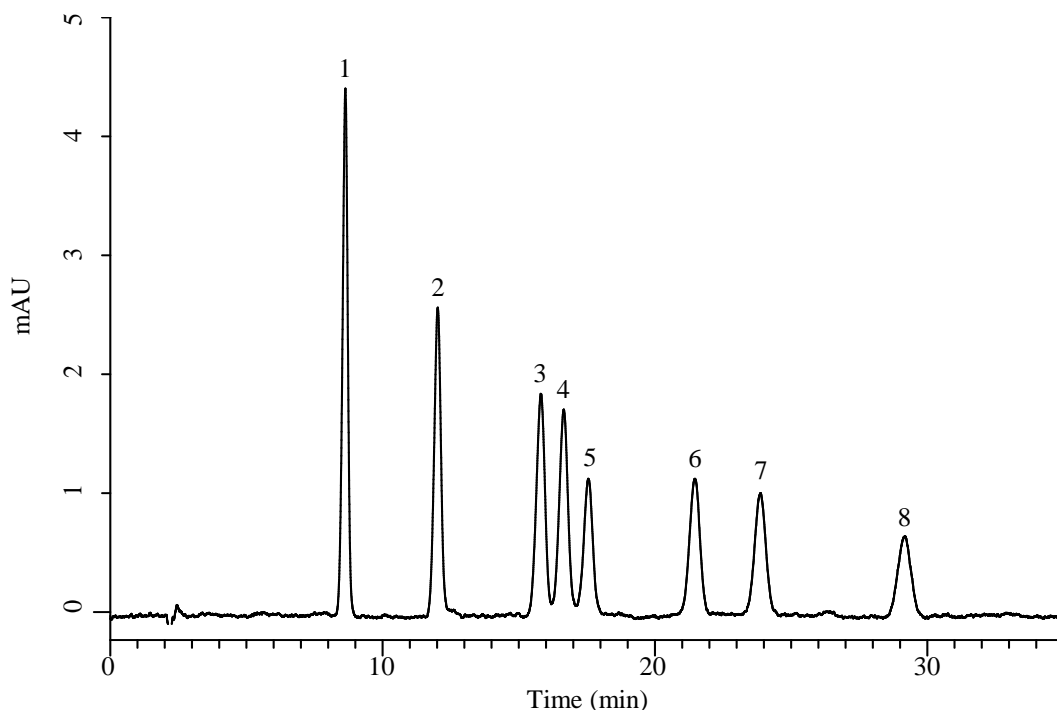


## Analysis of 8 kinds of Aldehydes (Detected by Pre-Column Method with DNPH)



### Conditions

**System** : Chromaster HPLC system (HITACHI)  
**Column** : InertSustain C30 (GL Sciences Inc.)  
 (5  $\mu$  m, 250 x 4.6 mm I.D.)  
**Column Cat. No.** : 5020-17145  
**Eluent** : A) CH<sub>3</sub>CN  
 B) H<sub>2</sub>O  
 A/B = 60/40, v/v  
**Flow Rate** : 1.0 mL/min  
**Col. Temp.** : 30 °C  
**Detection** : UV 360 nm  
**Injection Vol.** : 20  $\mu$  L  
**Sample** : Standard

### Analyte:

1. DNPH-Acetaldehyde
  2. DNPH-Propionaldehyde
  3. DNPH-Isobutyraldehyde
  4. DNPH-*n*-Butyraldehyde
  5. DNPH-Methylethylketone (MEK)
  6. DNPH-Isovaleraldehyde
  7. DNPH-*n*-Valeraldehyde
  8. DNPH-4-Methyl-2-pentanone (MIBK)
- (100  $\mu$  g/L each)