

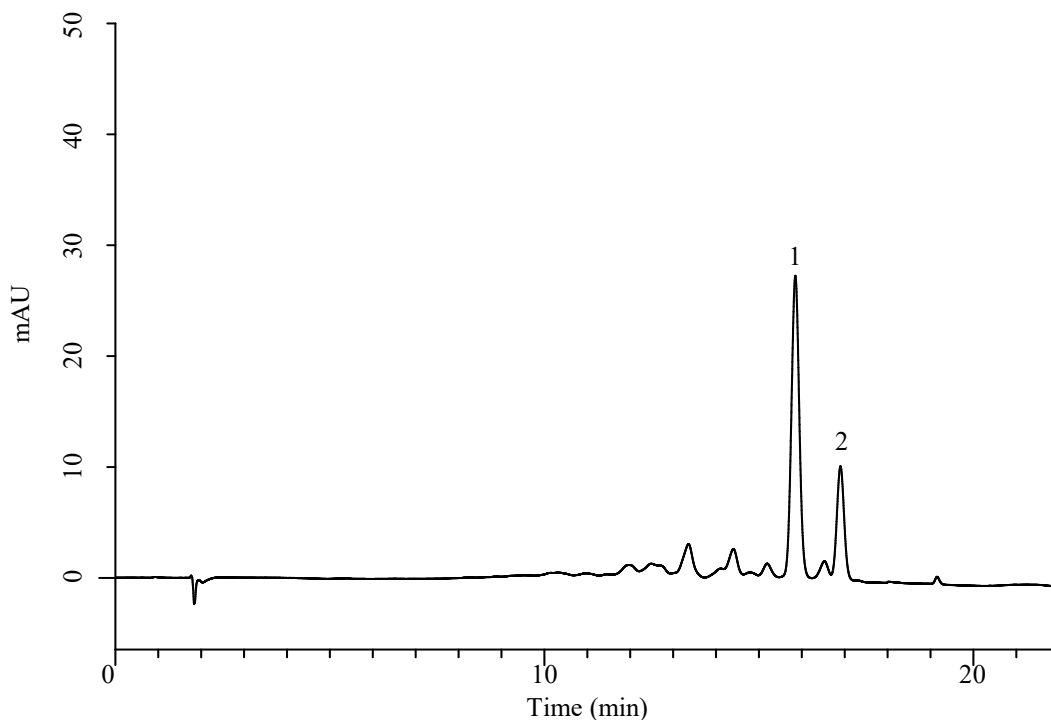
InertSearch for LC

Inertsil Applications

Analysis of Carotene

(Under the Condition of GB5009.83-2016)

Data No. LB748-1087



Conditions

System : Chromaster HPLC system (HITACHI)

Column : InertSustain C30 (GL Sciences Inc.)
(5 μ m, 150 x 4.6 mm I.D.)

Column Cat. No. : 5020-17144

Eluent : A) CH₃OH/CH₃CN/H₂O = 73.5/24.5/2, v/v/v
B) *tert*-Butyl methyl ether

Analyte:

1. α -Carotene

2. β -Carotene

(10 μ g/mL each)

Time (min)	A (vol%)	B (vol%)
0.0	100	0
15.0	59	41
18.0	20	80
19.0	20	80
20.0	0	100
22.0	100	0

Flow Rate : 1.0 mL/min

Col. Temp. : 30 °C

Detection : VIS 450 nm

Injection Vol. : 20 μ L

Sample : Standard