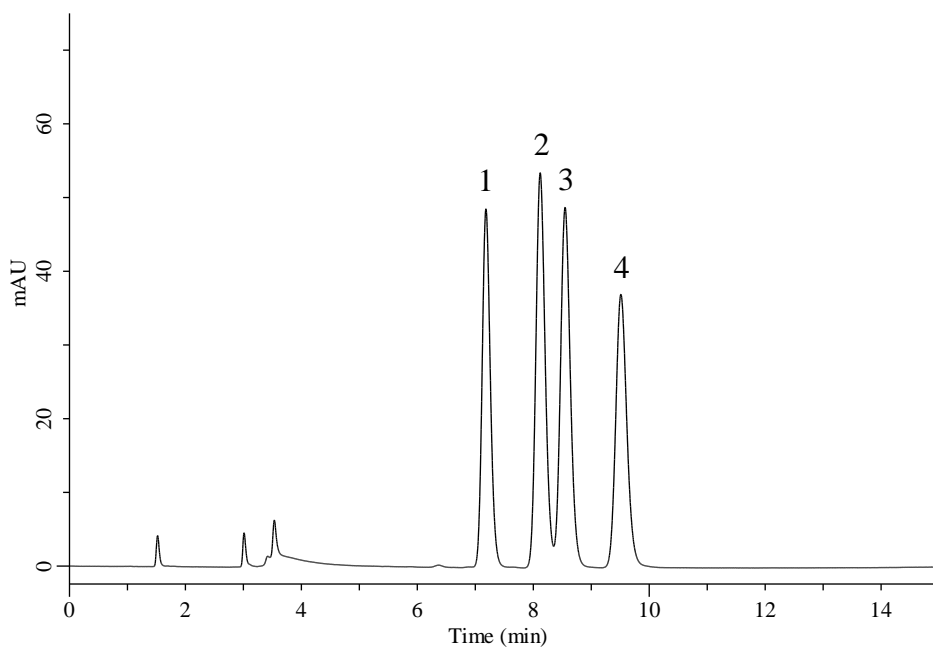


# InertSearch™ for LC

Inertsil® Applications

## Analysis of Vitamin E

Data No. LB753-0696



### Conditions

**System** : Primaide HPLC system (HITACHI)  
**Column** : InertSustain C30 (GL Sciences Inc.)  
(5  $\mu$  m, 250 x 4.6 mm I.D.)  
**Column Cat. No.** : 5020-17145  
**Eluent** : CH<sub>3</sub>OH  
**Flow Rate** : 1.0 mL/min  
**Col. Temp.** : 25 °C  
**Detection** : UV 210 nm  
**Injection Vol.** : 5  $\mu$  L  
**Sample** : Standard

### Analyte:

1.  $\delta$ -tocopherol  
2.  $\gamma$ -tocopherol  
3.  $\beta$ -tocopherol  
4.  $\alpha$ -tocopherol  
(50 mg/L each)