

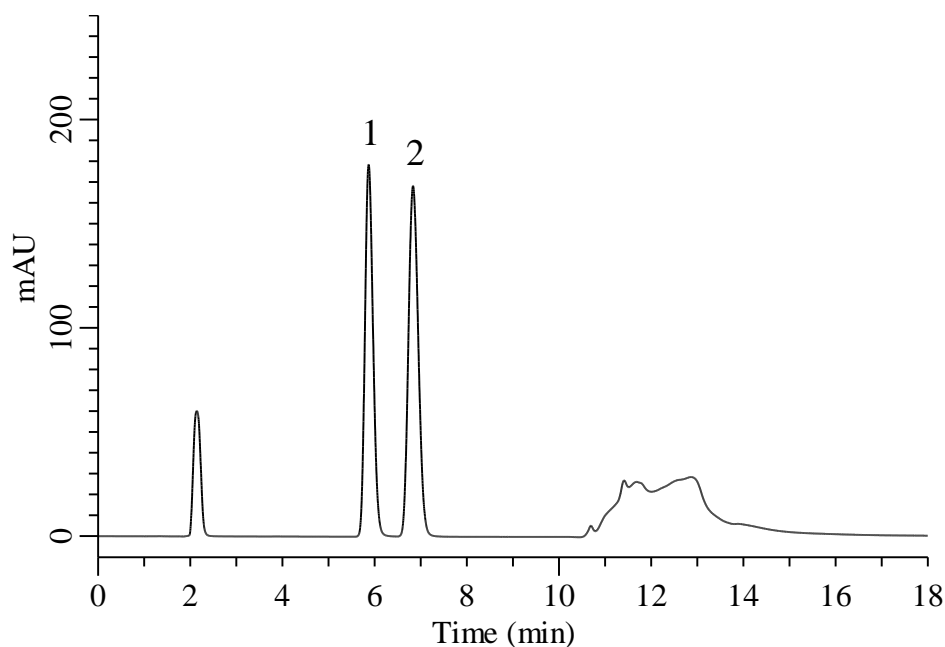
# InertSearch for LC

Inertsil Applications

## Analysis of Saccharin

(Under the Condition of the Japanese Pharmacopoeia 18<sup>th</sup>, Saccharin Sodium Hydrate)

Data No. LB754-0848



### Conditions

**System** : Primaide HPLC system (HITACHI)  
**Column** : Inertsil WP300 C18 (GL Sciences Inc.)  
(3.5  $\mu$  m, 150 x 4.6 mm I.D.)  
**Column Cat. No.** : 5020-90658  
**Eluent** : A) CH<sub>3</sub>OH  
B) 50 mM K<sub>2</sub>HPO<sub>4</sub> in (0.1% H<sub>3</sub>PO<sub>4</sub> in H<sub>2</sub>O)

### Analyte:

1. Phthalic anhydride 0.1 mg/mL  
2. Saccharin 0.1 mg/mL

Resolution (1, 2) : 2.82 ( $\geq 1.5$ )  
Symmetry factor (2) : 1.14 ( $\leq 1.5$ )

Time (min)	A (vol%)	B (vol%)
0.0	10	90
7.0	10	90
8.0	95	5
10.0	95	5
10.1	10	90
18.0	10	90

**Flow Rate** : 1.0 mL/min  
**Col. Temp.** : 20 °C  
**Detection** : UV 230 nm  
**Injection Vol.** : 10  $\mu$  L  
**Sample** : Standard