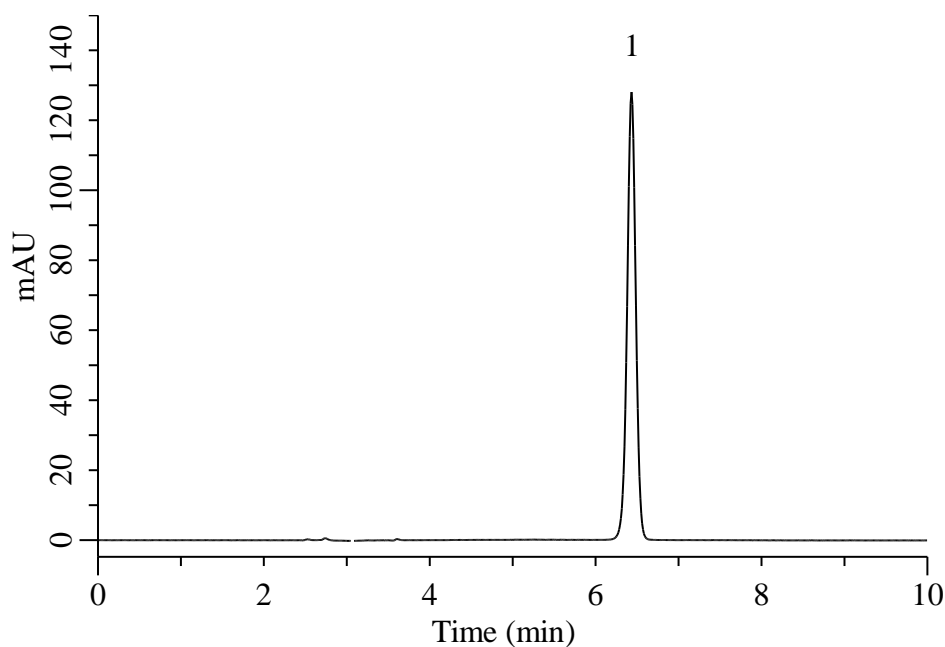


## Analysis of Oxaliplatin

(Under the Condition of the draft for the Japanese Pharmacopoeia 18th supplement II)



### Conditions

**System** : Primaide HPLC system (HITACHI)  
**Column** : InertSustainSwift C18 (GL Sciences Inc.)  
 (5  $\mu$  m, 250 x 4.6 mm I.D.)  
**Column Cat. No.** : 5020-88027  
**Eluent** : A) CH<sub>3</sub>CN  
 B) H<sub>2</sub>O (pH 3.0, H<sub>3</sub>PO<sub>4</sub>)  
 A/B = 1/99, v/v  
**Flow Rate** : 1.2 mL/min  
**Col. Temp.** : 40 °C  
**Detection** : UV 210 nm  
**Injection Vol.** : 20  $\mu$  L  
**Sample** : Standard

### Analyte:

1. Oxaliplatin 100 mg/L

Theoretical plates : 18,746 ( $\geq$  3,000)  
 Symmetry factor : 0.98 ( $\leq$  2.0)  
 RSD of the  
 peak area (%) (n=6) : 0.06 ( $\leq$  1.0)