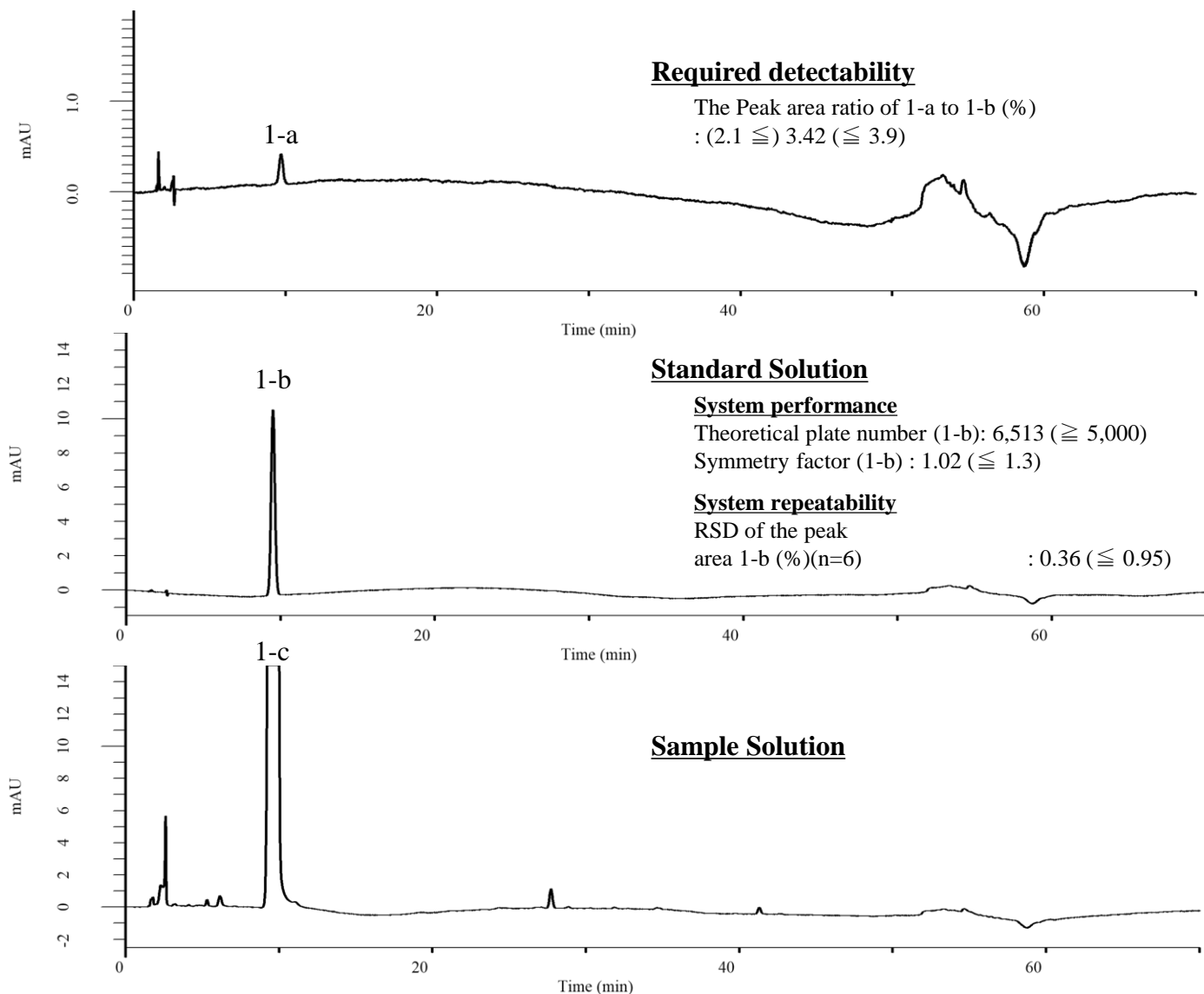


Analysis of Doripenem

(Under the Condition of the Japanese Pharmacopoeia 18th, Doripenem Hydrate)



Conditions

System : Chromaster HPLC system (HITACHI)
Column : InertSustain C18 (GL Sciences Inc.)
 (5 μ m, 150 x 4.6 mm I.D.)

Column Cat. No. : 5020-07345

Eluent : A) Solution*/CH₃CN = 97/3, v/v
 B) Solution*/CH₃CN = 70/30, v/v

Flow Rate : 1.0 mL/min

Col. Temp. : 30 °C

Detection : UV 230 nm

Injection Vol. : 20 μ L

Sample : Standard

Analyte

1. Doripenem

Time (min)	A (vol%)	B (vol%)
0.0	100	0
15.0	100	0
45.0	50	50
50.0	0	100
55.0	0	100

*Dissolve 2.04 g of potassium dihydrogen phosphate in water to make 1000 mL, and adjust to pH 5.6 - 5.7 with a solution prepared by dissolving 2.61 g of dipotassium hydrogen phosphate in water to make 1000 mL.