

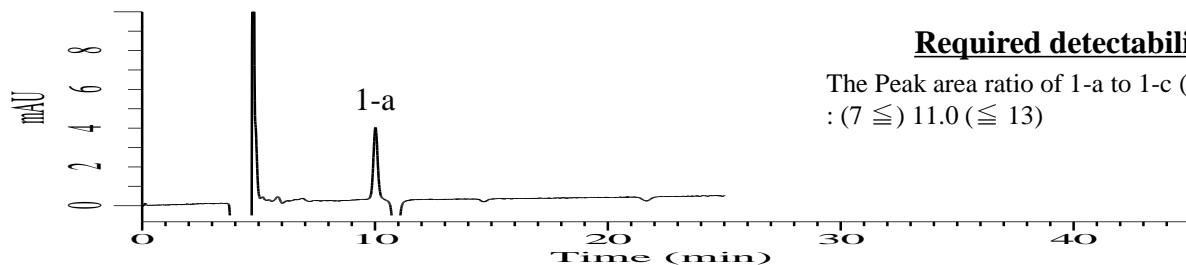
InertSearch™ for LC

Inertsil® Applications

Analysis of Doripenem

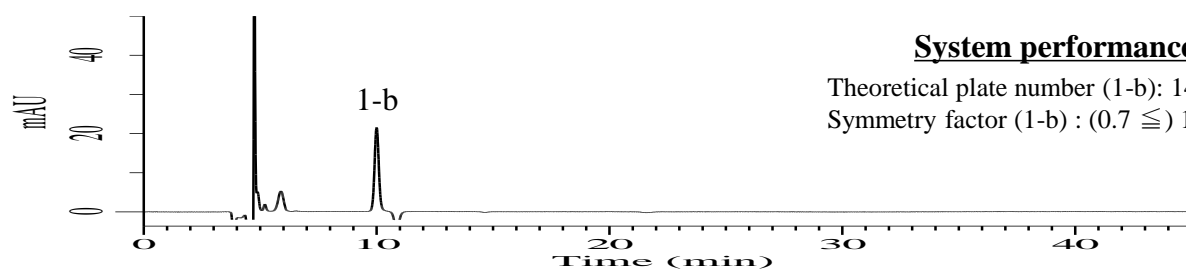
(Under the Condition of the Japanese Pharmacopoeia 18th, Doripenem Hydrate)

Data No. LB759-0919



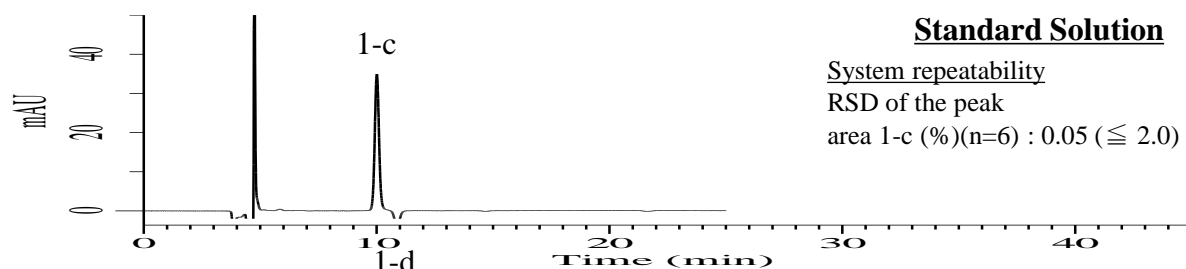
Required detectability

The Peak area ratio of 1-a to 1-c (%)
: (7 ≤) 11.0 (≤ 13)



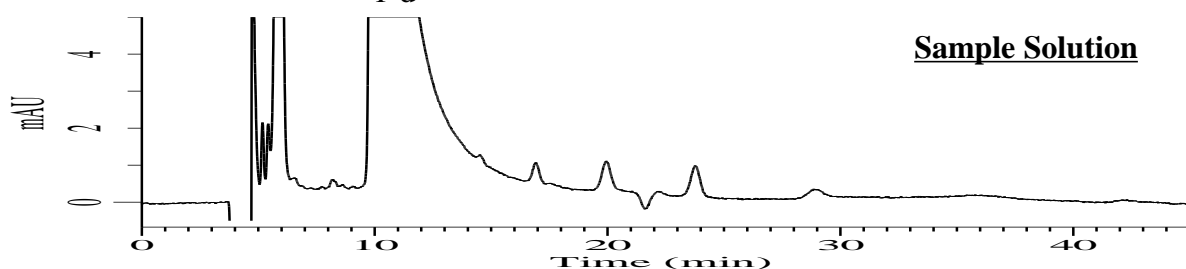
System performance

Theoretical plate number (1-b): 14,338 (≥ 5,000)
Symmetry factor (1-b) : (0.7 ≤) 1.08 (≤ 1.3)



Standard Solution

System repeatability
RSD of the peak
area 1-c (%) (n=6) : 0.05 (≤ 2.0)



Sample Solution

Conditions

System : Chromaster HPLC system (HITACHI)
Column : InertSustain AX-C18 (GL Sciences Inc.)
(5 μm, 150 x 4.6 mmI.D.)
Column Cat. No. : 5020-91014
Eluent : A) CH₃CN
B) (0.45% H₃PO₄ + 1% Triethylamine) in H₂O
A/B = 5/95, v/v
Flow Rate : 0.5 mL/min
Col. Temp. : 40 °C
Detection : UV 215 nm
Injection Vol. : 20 μL
Sample : Standard

Analyte:

1. Doripenem