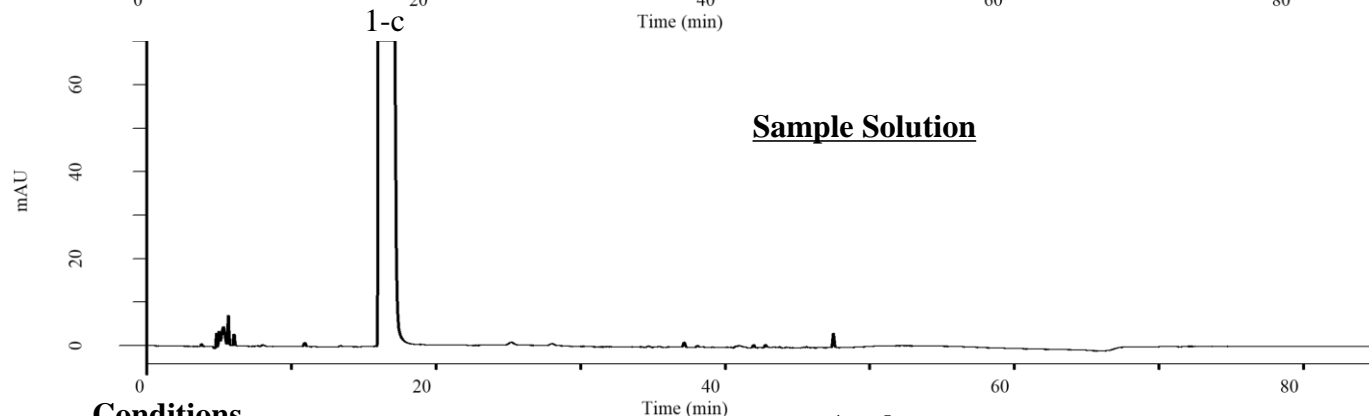
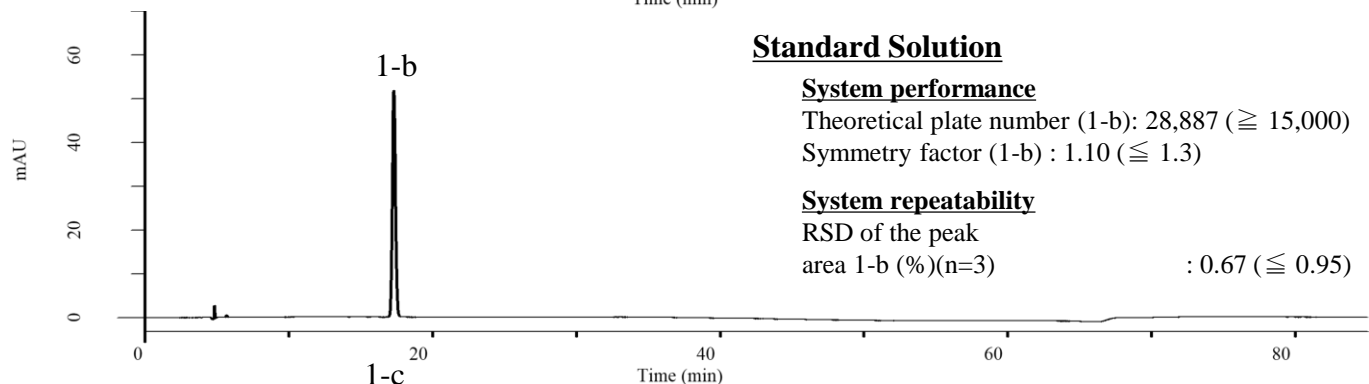
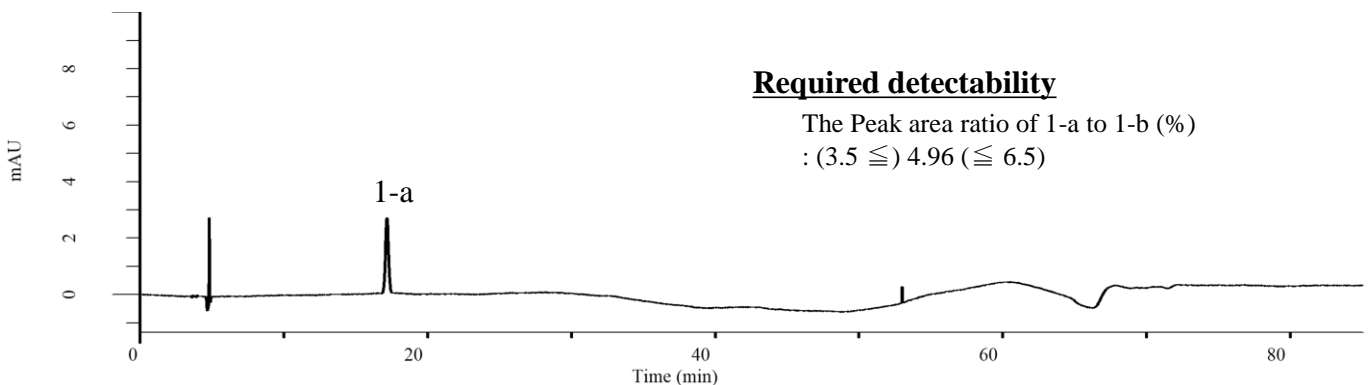


Analysis of Doripenem

(Under the Condition of the Japanese Pharmacopoeia 18th, Doripenem Hydrate)



Conditions

System : Primaide HPLC system (HITACHI)
Column : InertSustain C18 (GL Sciences Inc.)
(3 μ m, 250 x 4.6 mm I.D.)
Column Cat. No. : 5020-07446
Eluent : A) Solution*/CH₃CN = 90/10, v/v
B) Solution*/CH₃CN = 60/40, v/v
Flow Rate : 0.8 mL/min
Col. Temp. : 30 °C
Detection : UV 310 nm
Injection Vol. : 20 μ L
Sample : Standard

Analyte

1. Doripenem

Time (min)	A (vol%)	B (vol%)
0.0	100	0
25.0	100	0
55.0	0	100
60.0	0	100

*To 11 mL of perchloric acid add water to make 500 mL. To 100 mL of this solution add water to make 1000 mL. To 600 mL of this solution add 100 mL of water, and adjust to pH 1.9 - 2.0 with a solution prepared by adding water to 2.81 g of sodium perchlorate monohydrate to make 1000 mL.