

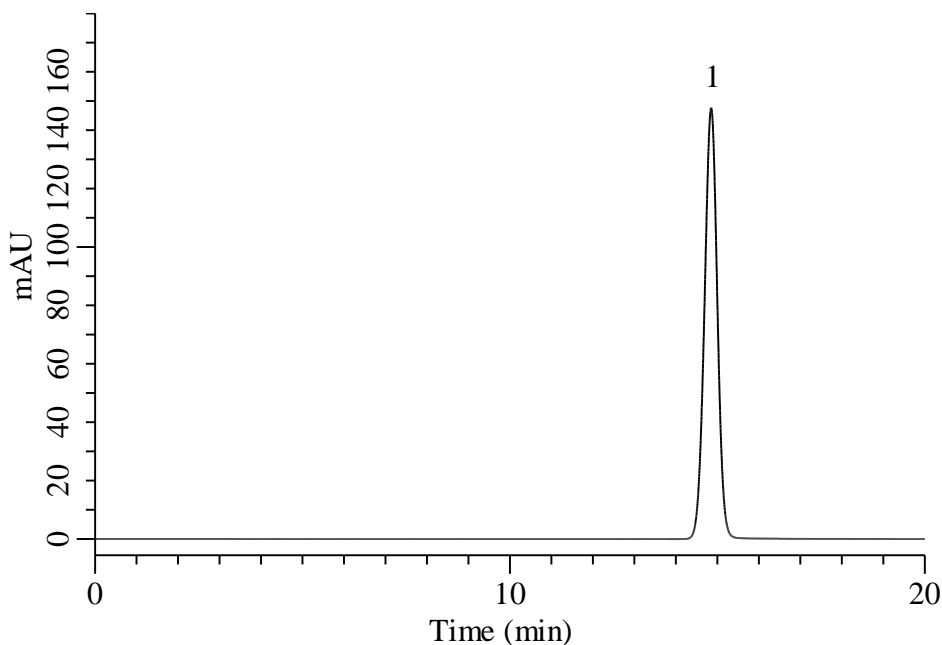
InertSearch™ for LC

Inertsil® Applications

Analysis of Doripenem

(Under the Condition of the Japanese Pharmacopoeia 18th, Doripenem Hydrate)

Data No. LB761-0919



Conditions

System : Primaide HPLC system (HITACHI)

Column : Inertsil ODS-4 (GL Sciences Inc.)
(5 μ m, 150 x 4.6 mm I.D.)

Column Cat. No. : 5020-03945

Eluent : A) CH₃CN
B) Solution*
A/B = 3/97, v/v

Flow Rate : 0.85 mL/min

Col. Temp. : 25 °C

Detection : UV 300 nm

Injection Vol. : 10 μ L

Sample : Standard

*Adjust the pH of 90 mL of 0.02 mol/L potassium dihydrogen phosphate TS to pH 5.6 - 5.7 with a solution prepared by dissolving 3.48 g of dipotassium hydrogen phosphate in water to make 1000 mL. To 100 mL of this solution add water to make exactly 1000 mL.

Analyte:

1. Doripenem 125 mg/L

Theoretical plates : 10,737 (\geq 5,000)

Symmetry factor : 0.99 (\leq 1.3)

RSD of the
peak area (%) (n=6) : 0.26 (\leq 1.0)